

ULTREX<sup>®</sup>  
FIBERGLASS:  
QUITE POSSIBLY  
THE PERFECT  
BUILDING  
MATERIAL<sup>®</sup>



**MARVIN<sup>®</sup>** 

## THE MARVIN MATERIALS DIFFERENCE: ULTREX®

Choosing the right materials for windows and doors is important for appearance and performance. Ultrex, an innovative fiberglass material developed over 20 years ago, was one of the first premium composites on the market. All composites are created equal.

- Some companies use materials like sawdust and vinyl to produce a composite with fundamentally different properties and performance values. But Ultrex is made of a high density of woven fibers bound by a thermally-set resin, which is cured under pressure and temperature than vinyl-based composites.
- With such different materials grouped in the composites category, it becomes difficult to know what sets them apart.

**Elevate collection:** wood interiors and fiberglass exteriors  
**Essential collection:** fiberglass interiors and exteriors

## STRENGTH AND STABILITY OF ULTREX

Ultrex fiberglass is highly impact resistant and more rigid than vinyl and vinyl/wood composites. Issues of instability and less-than-perfect alignment that can complicate installation—and long-term performance—are not a concern with Elevate and Essential collection windows and doors.

The exceptional strength and stability of Ultrex eases installation and establishes a secure, long-lasting fit that stays square and true, year after year.

### PULTRUDED FIBERGLASS

Thin strands of strong glass cables, saturated with compounded resins, create a durable material.

### PATENTED FINISH

The patented finishing process applies an impermeable and AAMA 624 verified factory finish.



## FIBERGLASS

When it comes to long-term material pioneered by Marvin the market. However, not all

composite material with is different. Its material makeup that makes it more resistant to

becomes important to know

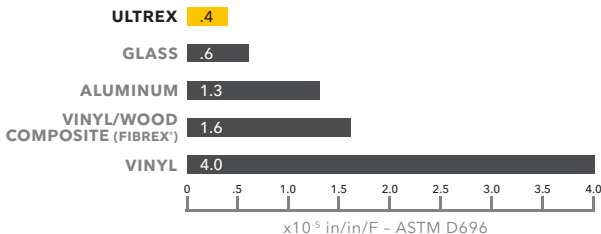


## TEMPERATURES MAY FLUCTUATE, BUT ULTREX WON'T

Ultrrex expands and contracts at virtually the same rate as glass so it works with glass rather than against it. This means seals aren't as prone to leaking and windows aren't subjected to sagging issues like other composites.

This is especially true when compared to vinyl, which can distort in extreme heat and crack in fluctuating temperatures. Ultrrex resists distortion even at temperatures up to 285°F. Rapid temperature change doesn't faze Ultrrex: When the mercury climbs from -30°F to 70°F, a 6 foot stile changes less than 1/32" in length.

### EXPANSION MEASUREMENT



## INDUSTRY'S BEST PATENTED FIBERGLASS FINISH

Ultrax is the first and only fiberglass finish to be verified to AAMA's 624 voluntary finish specifications for fiber reinforced thermoset profiles (fiberglass).

Windows and doors made with Ultrax resist scratches, dings, and marring more than vinyl. Our patented, mechanically bonded acrylic finish is up to three times thicker than painted competitive finishes, and it resists UV degradation up to five times longer than vinyl—even on dark colors.

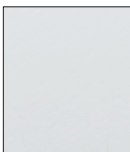
### PATENTED ACRYLIC CAP



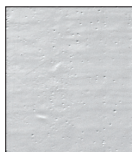
**ULTRAX**



**COMPOSITES**



**ULTRAX**



**COMPOSITES**

## ENERGY EFFICIENCY

Ultrax has an extremely low rate of conductivity. This means Ultrax will not conduct heat and cold, so it provides an energy-efficient framework for Elevate and Essential collection windows and doors, that pairs nicely with Marvin's Low E glazing options.

©2019 Marvin Lumber and Cedar Co., LLC. All rights reserved.

®Registered trademark of Marvin Lumber and Cedar Co., LLC.

Fibrex® is a registered trademark of Andersen Windows and Doors.

Part #19981618. October 2019.