



# ENTRY DOORS

BROCHURE



**686VPR, SL694VPR**  
Shown in Fiberglass Smooth  
Alabaster Paint

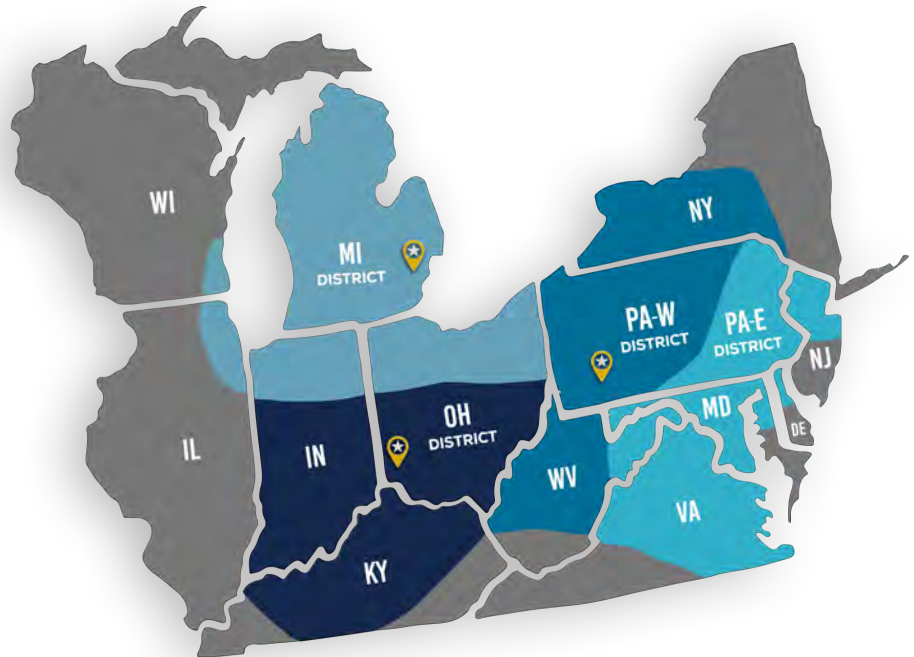


# ABOUT MMI DOOR

*YOUR DOORWAY TO A BEAUTIFUL HOME*

For over 67 years, MMI DOOR, a wholly owned subsidiary of JELD-WEN Holdings, Inc., has earned the reputation of being the preferred door supplier to building supply dealers and home centers. With 3 locations, MMI DOOR is a true, single source door provider. We strive to be the most dependable and innovative, value-add fabricator in the marketplace.

Our products are stored, assembled and staged in over 700,000 square feet of heated warehouses. Strict quality control standards are followed, allowing us to deliver maximum value. With one of the largest and most diverse inventories in the country, MMI DOOR offers product choices that are second to none.



## ABOUT JELD-WEN

*DEDICATION FROM DAY ONE*

Since 1960, when JELD-WEN began with one millwork plant, we've been dedicated to crafting windows and patio doors that enhance the beauty and functionality of your home. Today we continue that tradition with products that are durable and worry-free. It's the result of innovation as a driving force in all that we do.

It begins in the forests where we harvest our premium lumber. In addition to responsible reforestation practices, we recycle as much of our raw resources as possible. Innovation is also at the heart of our design and manufacturing process. With JELD-WEN, you can expect products that are more than just beautiful on the outside. The inner workings of our doors are engineered to function flawlessly for years to come.



**866CHI**  
Shown in Fiberglass Fir Grain  
Cherry Stain



Combining our extensive selection of premium fiberglass, fiberglass and steel door styles with 16 stocked collections and 40 special order collections of decorative, energy efficient glass designs allows you to create the perfect exterior door for every application

**"Replacing your front door can increase the perceived value of your home 6%"**  
– ODL Proprietary Research

# WELCOME HOME

CHOOSE YOUR DOOR	<b>1</b>
DOOR GLASS	<b>2</b>
PRE-FINISH PROGRAM	<b>3-4</b>
FIBERGLASS DOORS	<b>5-6</b>
STEEL DOORS	<b>7-8</b>
COMPONENTS & HARDWARE	<b>9-10</b>
DOOR FRAMES	<b>11-13</b>
ASTRAGALS	<b>14</b>
GLASS-LITE FRAMES	<b>15</b>
HARDWARE & ACCESSORIES	<b>16</b>
TRILENNIUM®	<b>17</b>
PET DOORS	<b>18</b>
PATIO & DOUBLE DOORS	<b>19-22</b>
FIRE-RATED DOORS	<b>23-24</b>
SEVERE WEATHER FIBERGLASS DOORS	<b>25-28</b>
ARCHITECTURAL COLLECTION	<b>29-32</b>
SIMULATED DIVIDED LITES	<b>33-34</b>
CRAFTSMAN COLLECTION	<b>35</b>
SPOTLIGHTS™ COLLECTION	<b>36</b>

---

## DECORATIVE GLASS

<i>BEAUFORT</i>	<b>37</b>
<i>ELEGANT STAR</i>	<b>38</b>
<i>GRACE</i>	<b>39</b>
<i>HARRIS</i>	<b>40</b>
<i>HEIRLOOMS</i>	<b>41</b>
<i>MAJESTIC</i>	<b>42</b>
<i>MONTCLAIRE</i>	<b>43</b>
<i>NOUVEAU</i>	<b>44</b>
<i>OAK PARK</i>	<b>45</b>
<i>PEMBROOK</i>	<b>46</b>
<i>SELWYN</i>	<b>47</b>

---

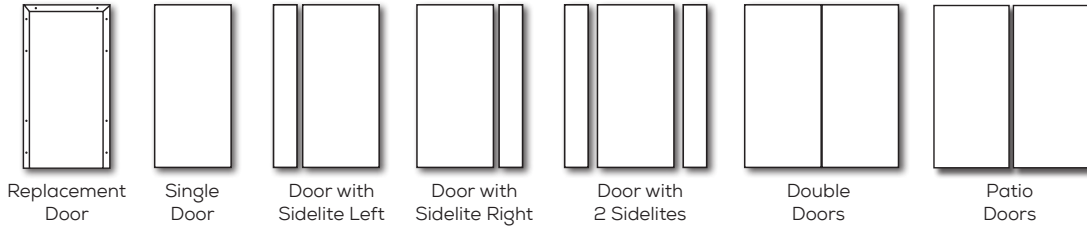
## TEXTURED PRIVACY GLASS

<i>BLANCA</i>	<b>48</b>
<i>CHINCHILLA</i>	<b>49</b>
<i>RAIN</i>	<b>50</b>
<i>VAPOR</i>	<b>51</b>
SPECIAL ORDER	<b>52-53</b>
MINI BLINDS COLLECTION	<b>54</b>
GRILLES BETWEEN GLASS COLLECTION	<b>55-56</b>
CLASSIC COLLECTION	<b>57-60</b>
EXTERIOR DOOR ORDER FORM	<b>61</b>
OPENINGS	<b>62</b>
WARRANTIES	<b>63-64</b>

# CHOOSE YOUR DOOR

MMI DOOR offers one of the widest selections of fiberglass and steel entry doors in the country. We understand the need and desire for custom millwork products and have based our diverse product offering around that simple fact. Sometimes, with all of the options that are available, simplification is key. Follow these 5 easy steps to choose your new entry door from MMI DOOR.

## 1. CHOOSE YOUR DOOR CONFIGURATION



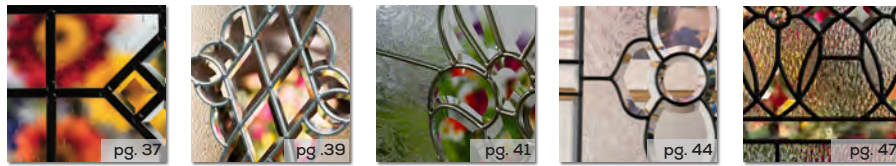
## 2. CHOOSE YOUR DOOR STYLE

The Possibilities are Endless!

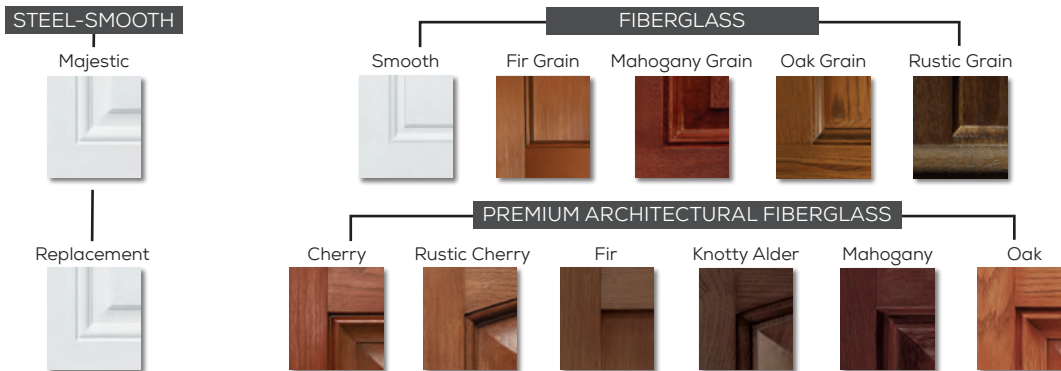


## 3. CHOOSE YOUR GLASS DESIGN

We stock 16 decorative glass collections some with multiple coming options. Plus, we offer over 40 special order decorative glass collections. Here are a few examples



## 4. CHOOSE YOUR DOOR SURFACE



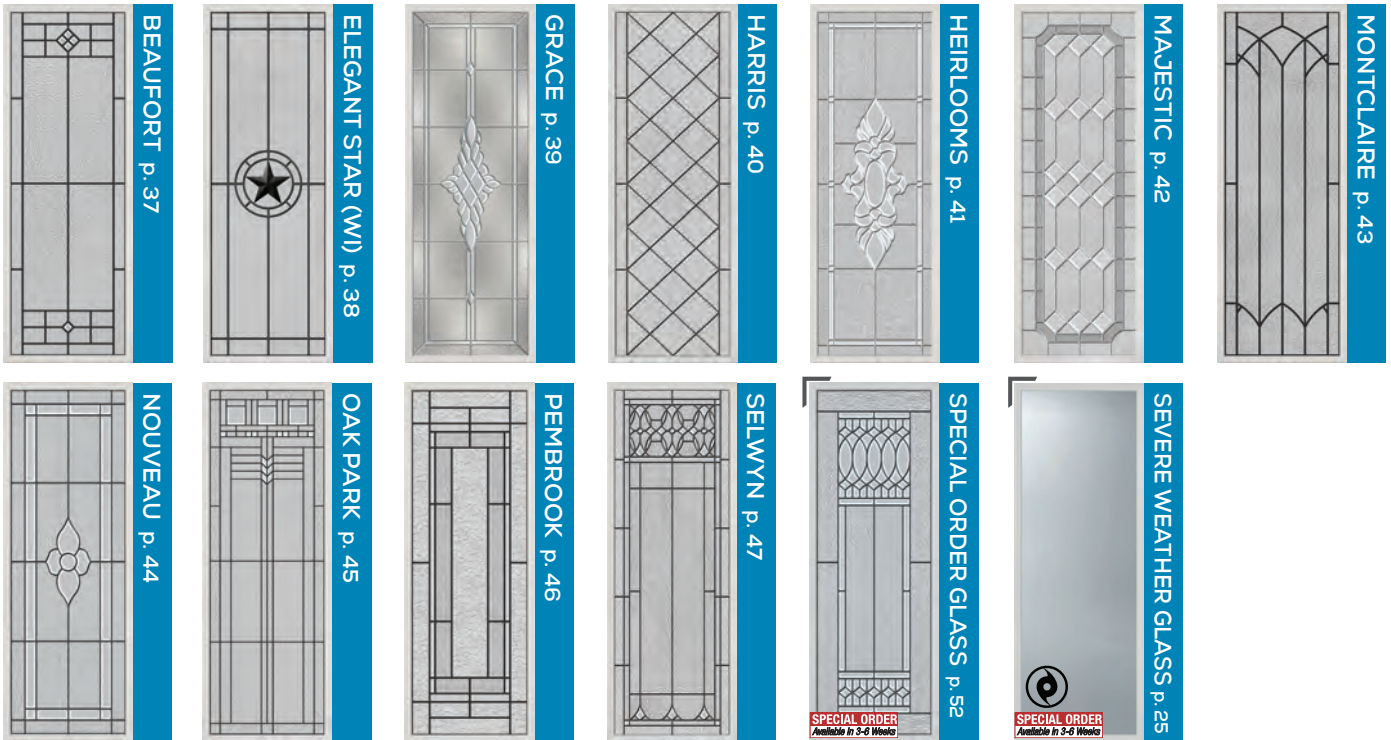
## 5. CHOOSE YOUR DOOR FINISH

Choose from our 19 Paint Colors and 6 Stain Colors!

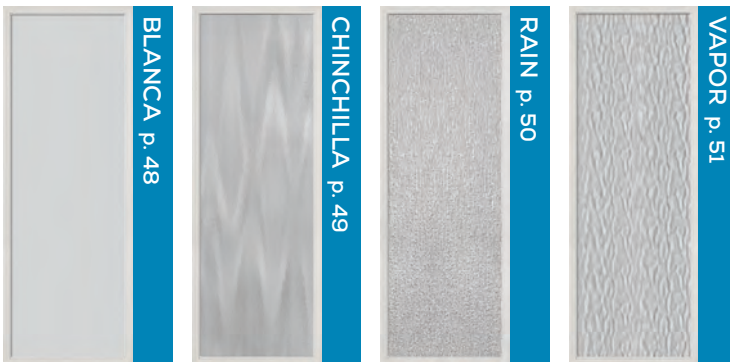


# DOOR GLASS

## DECORATIVE GLASS COLLECTION



## TEXTURED PRIVACY GLASS COLLECTION



## ADDITIONAL GLASS OPTIONS



## CAMING OPTIONS

Caming is the metal banding that joins panels of glass together in a unique design. Simply said, it is "the lead in leaded glass".

Make sure to choose a caming finish that coordinates your door hardware, outdoor fixtures and interior furnishings to fit your personal style. It may seem like a small detail but it can have a big impact on the overall look of your entryway.



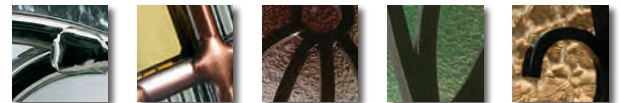
Brass Caming

Nickel Caming

Satin Nickel Caming

Zinc Caming

Patina Caming



Black Chrome Caming

Oil Rubbed Bronze Caming

Bronze Vein Wrought Iron

Nickel Vein Wrought Iron

Wrought Iron

**YOUR ENTRY WAY IS A GUEST'S  
FIRST IMPRESSION –  
MAKE SURE IT REFLECTS YOU!**

# PRE-FINISH PROGRAM



## NOTHING BEATS A QUALITY FINISH

Our process begins with a dust-free, rigorously inspected unfinished door followed by multi-coat paint or stain applications, baked on at every step. The result is a finish as durable as it is beautiful.

## THE MMI DOOR PROMISE

THE PRE-FINISH 5-YEAR LIMITED WARRANTY INCLUDES:

5-Year limited coverage from the date of purchase for the painted or stained finish by MMI DOOR on the door component of any residential premium or standard fiberglass exterior prehung door unit when properly protected from the environment. Please evaluate your current weather exposure and home overhangs, as certain applications of prefinished doors with excessive exposure to weather can void the warranty.

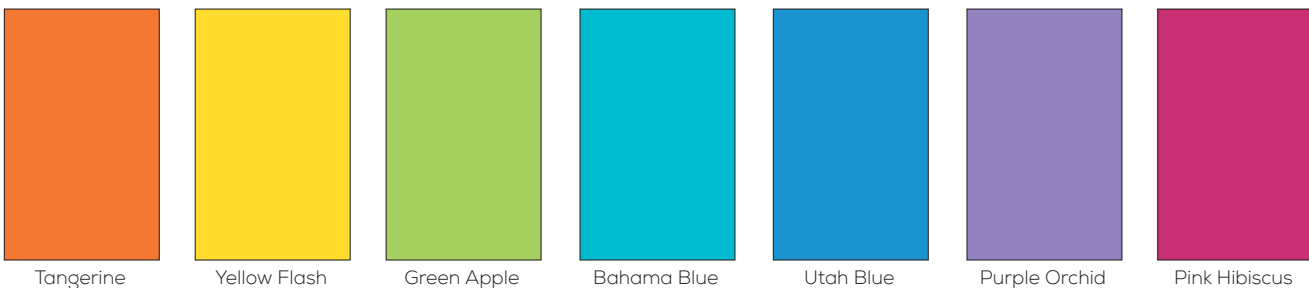


Please see [mmidoor.com](http://mmidoor.com) for pre-finished warranty information.

## STANDARD PAINT COLORS



## BOLD PAINT COLORS



Actual paint and stain finishes may vary slightly from the sample version.

## STANDARD STAINS

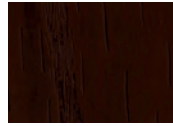
### Oak Grain



Cherry



Dark Oak



Espresso



Golden Oak



Teak



Walnut

### Mahogany Grain



Cherry



Dark Oak



Espresso



Golden Oak

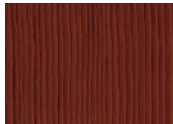


Teak

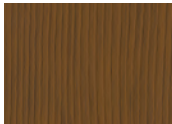


Walnut

### Fir Grain



Cherry



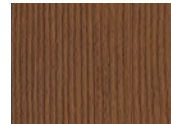
Dark Oak



Espresso



Golden Oak

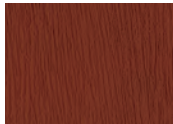


Teak



Walnut

### Rustic Grain



Cherry



Dark Oak



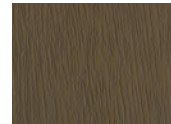
Espresso



Golden Oak



Teak



Walnut

## PREMIUM ARCHITECTURAL STAINS

### Cherry Grain



Cherry



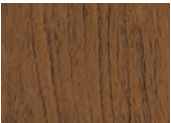
Dark Oak



Espresso



Golden Oak

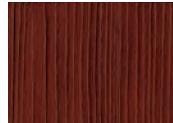


Teak

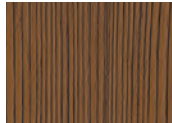


Walnut

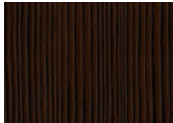
### Fir Grain



Cherry



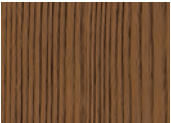
Dark Oak



Espresso



Golden Oak



Teak



Walnut

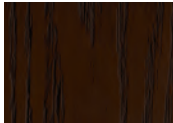
### Oak Grain



Cherry



Dark Oak



Espresso



Golden Oak

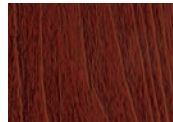


Teak



Walnut

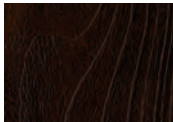
### Knotty Alder Grain



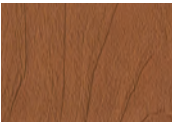
Cherry



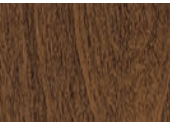
Dark Oak



Espresso



Golden Oak



Teak

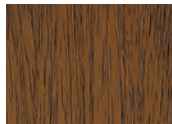


Walnut

### Mahogany Grain



Cherry



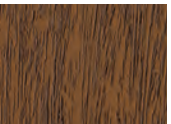
Dark Oak



Espresso



Golden Oak



Teak



Walnut

Actual paint and stain finishes may vary slightly from the sample version.

# FIBERGLASS DOORS

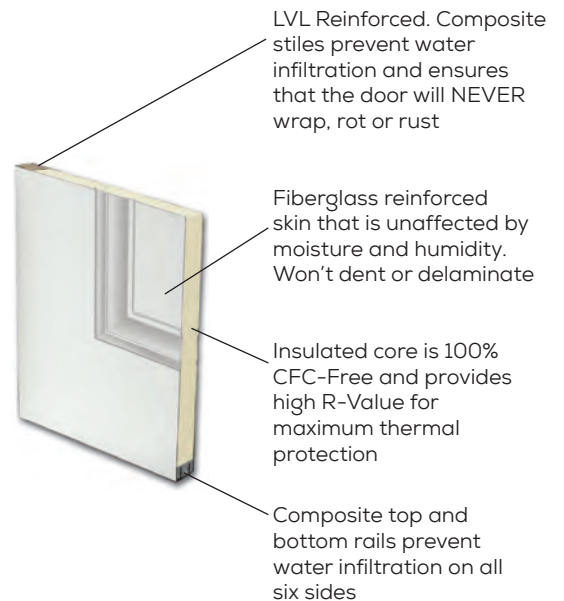
## FIBERGLASS DOORS

A new fiberglass entry door can add substantial curb appeal to your home. Fiberglass is virtually maintenance free and will not warp, rot, dent, or split.

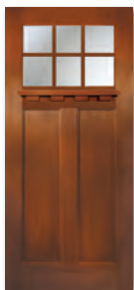


**686MTC, (2) SL694MTC**  
Shown in Fiberglass Smooth  
Bronze Paint

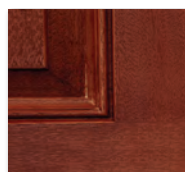
- Limited Lifetime Warranty
- Fiberglass reinforced door skins, full length composite stiles and composite top and bottom rails to prevent water infiltration on all 6 sides
- Available in smooth or woodgrain designs
- The woodgrain series (Oak, Mahogany, Fir or Rustic) provides the rich appearance of wood with the strength and stability of fiberglass



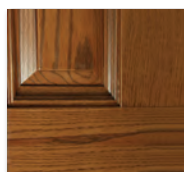
At MMI DOOR, it is important to make sure our fiberglass exterior door offering meets our customer's goals. Below are examples of the fiberglass door options available. Fiberglass doors are available in a smooth series for easy painting, and four distinctive woodgrain patterns (Fir, Mahogany, Oak and Rustic) suitable for staining or painting.



Fir Grain



Mahogany Grain



Oak Grain



Rustic Grain



Smooth



# FIBERGLASS DOORS

## ARCHITECTURAL™ COLLECTION

MMI DOOR's Architectural™ Collection is a premium door system for the discerning individual, offering a wood door alternative utilizing the most authentic wood grain replication available. The front door is the threshold to your home: a place of warm welcomes and goodbyes. Whether you need a touchable and authentic wood grain or a luxe and minimalist smooth finish, Architectural doors projects your most stylish self. Substance matters too of course, so all our composite components are clad in fiberglass, match perfectly and have twice the screw-holding power of other materials.

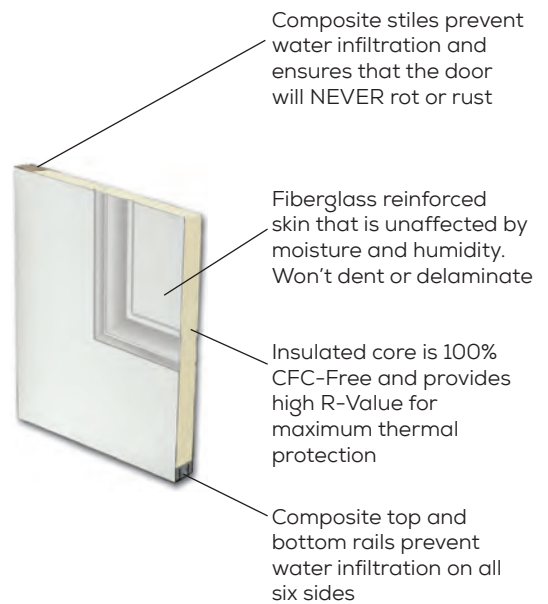


## BUILDER'S CLASSIC



The Builder's Classic Collection is our fiberglass door at steel door pricing. The Builder's Classic represents value by offering a limited collection, that cannot be cut down or prefinished and comes with a 2 Year Limited Warranty.

- 2 Year Limited Warranty
- Deep embossing and panel detail provide the most significant curb appeal
- Fiberglass reinforced door skins, full length composite stiles and composite top and bottom rails to prevent water infiltration on all 6 sides

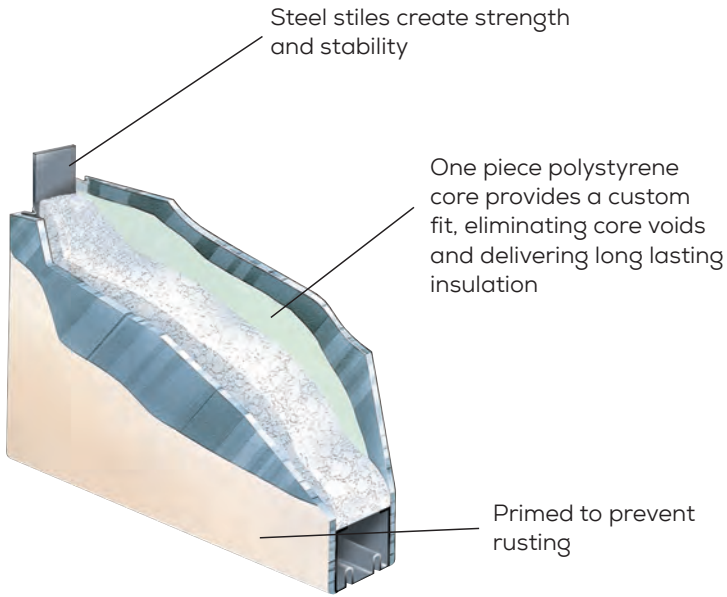


**684RLB**  
Shown in Builder's Classic Fiberglass Brilliant White Paint

# STEEL DOORS

## MAJESTIC SERIES

- 10 Year Limited Warranty
- 24 gauge, all steel construction provides superior strength and durability. Galvanization resists rust and corrosion
- The "Double Hip" panel design enhances your home's appearance
- Available with a 90 Minute Fire Rating – see page 24



Some of our Steel Doors do qualify for the Energy Star® Program. Please refer to [www.mmidoor.com](http://www.mmidoor.com) for a complete list of our qualifying products. (Qualification based on 2018 Energy Star® Program Criteria and can change)



**684GBG**  
Shown in Majestic Steel  
Brilliant White Paint

## REPLACEMENT SERIES

### QUICK & EASY INSTALLATION; INSTALLS IN HALF OF THE TIME OF NEW CONSTRUCTION

- Replacement steel exterior doors are durable and manufactured to prevent water absorption, resist rust and come factory primed for easy finishing.
- Replacement Series is designed to be installed using your existing door frame, not the rough stud opening
- Great choice for Do-It-Yourselfers: Minimal tools and product knowledge
- Convenience – Simplifies and quickens the installation process



Double Hip Panel Design

6 preset security installation fastening points at critical lockset impact area



Deadbolt Prep  
Lockset Area  
Entry Prep  
Adjustable Sill

### FINISHES

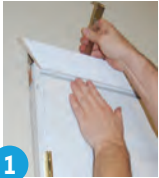
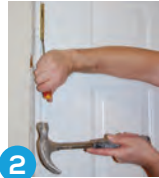

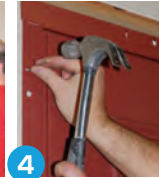

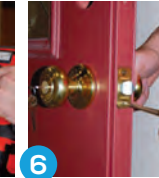

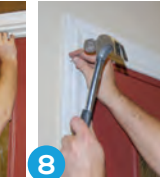


18 Gauge Steel Frame



24 Gauge Steel Face

Bulb Door Sweep

							
<b>1</b>	<b>2</b>	<b>3</b>	<b>4</b>	<b>5</b>	<b>6</b>	<b>7</b>	<b>8</b>
Carefully remove and save interior trim	Remove old door, strike plates, hinges and threshold	Insert new replacement unit into the opening from the interior of your home	Nail replacement unit into position	Install security screws	Install door hardware	Install weatherstripped wood stops	Carefully replace the saved interior trim

## KEY FEATURES

- 10 Year Limited Warranty.
- Prehung on a commercial, 18 gauge steel frame
- All steel door – 24 gauge face and 22 gauge reinforced edges for additional strength and security
- 14 Pre-set security installation with fastening points secure the opening – 6 at the critical lockset impact area
- All doors are pre-prepped for entry and deadbolt locks and are factory primed
- Weatherstrip system - bulb door sweep, adjustable sill, weatherstrip stop and corner seals complete the entire package
- 2/6, 2/8, 2/10 & 3/0 – 6/8 and 7/0 sizes are available. Sizes may vary by door style
- Double Hip Panel Design
- Configurable with clear, decorative, or textured glass
- Clear glass available with simulated divided lites, mini blinds or grilles between glass

Please Note: 2/8 replacement doors with decorative 1/2 & full lites and 2/6 replacement doors with clear 1/2 & full lites will require a glass offset of 1/4" from lock prep.

# COMPONENTS & HARDWARE

**WHEN IT COMES TO ACCESSORIES, YOU HAVE OPTIONS WITH MMI DOOR.**



21  
Shown in Fiberglass Smooth  
Red Saffron Paint

## TYPES OF SILLS



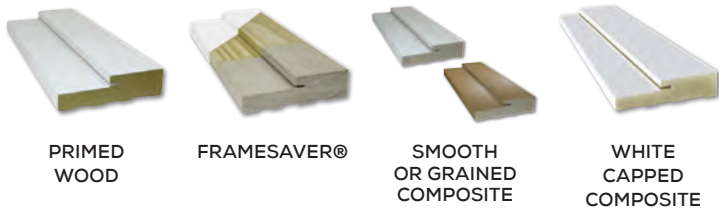
COMPOSITE  
ADJUSTABLE SILL

CONTINUOUS  
SILL

SILL  
COVER

ADA  
SILL

## TYPES OF FRAMES



PRIMED  
WOOD

FRAMESAVER®

SMOOTH  
OR GRAINED  
COMPOSITE

WHITE  
CAPPED  
COMPOSITE

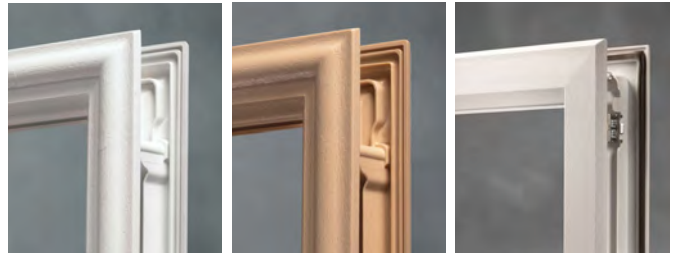
## RETRACTABLE SCREENS



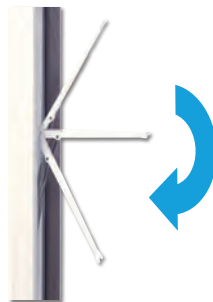
## PET DOORS



## GLASS-LITE FRAMES



## ULTIMATE FLIP LEVER™ ASTRAGAL



## HARDWARE & ACCESSORIES

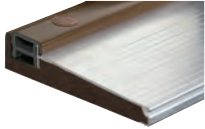


# COMPONENTS & HARDWARE

## SILLS

### TYPES OF SILLS

#### COMPOSITE ADJUSTABLE SILL



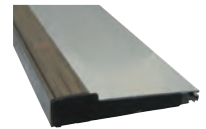
Advanced technology sills are made of all-composite substrates, synthetic caps and nosing. These materials prevent rotting, warping or deteriorating over time.

#### CONTINUOUS SILL

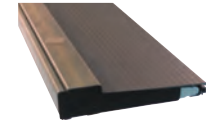


By providing a continuous sill across the door unit, you receive a better fit that prevents leaks. Patented inactive Sidelite Seats are repositionable for Mull or Patio System convenience.

#### FINISHES



MILL



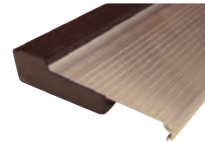
BRONZE

#### SILL COVER



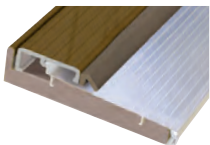
Composed of a durable material, sill covers give valuable protection against damage to the sill during the construction process.

#### FIXED INSWING



This sill is perfect for garage and utility doors and comes with a convertible cap to allow easy conversion to an adjustable cap.

#### FIXED OUTSWING BUMPER



Ultimate protection with increased pressure against the door producing a tight seal and excellent protection for high exposure areas.

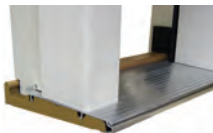
#### ADA COMPLIANT THERMALLY BROKEN



By incorporating a dam that meets ADA height requirements, a better seal is created between the door and sill, while providing ease of entry.



### CONTINUOUS HEADERS AND SILLS



Continuous headers and sills are part of an error-free system, built to spec, for greater structural integrity.



One piece mulls feature superior strength, a perfect fit and no additional finishing.



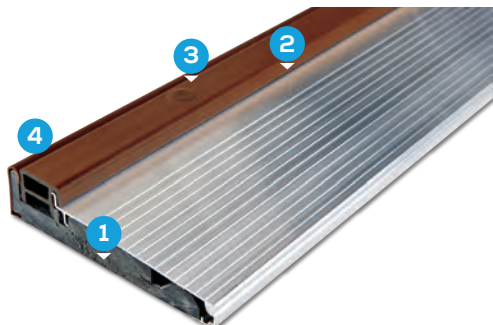
Sill gasket provides a water tight seal between the end of the sill and the door jamb.



Our mull systems include inactive seats engineered for perfect panel placement.

### Z-SERIES SILLS

Synthetic materials eliminate the worries of wood and deliver the best sill on the market. Using a patented design of all synthetic components, the Z-Series Sill eliminates the worries of wood. Built to last, Z-Series sills protect your entry from unsightly damage, rusted screws, discoloration, deformity, gaps and dents.

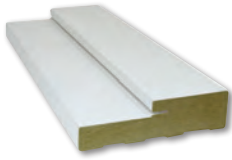


- 1. ALL-COMPOSITE SUBSTRATE**  
All-composite substrates won't rack, warp or rot. Ever.
- 2. NARROW SYNTHETIC HIGH DAM CAP**  
The cap resists fading and wear and won't warp or rot. A built-in seal keeps out air and water, even in the most severe conditions. The narrow cap width ensures the drip edge on the door bottom deflects water away from the cap.
- 3. SEALED ADJUSTMENT SCREWS**  
Patented sealing plugs hide unsightly screws and keep water and dirt away from the adjustment mechanism, maintaining adjustability of the sill cap over time.
- 4. COMPOSITE CAP AND NOSING**  
Provides resistance to wear and discoloration and offer a unique aesthetic appeal.

# FRAMES

## FRAME TYPES

Prefinishing the frame the same paint or stain color has always been a challenge in our industry. Fortunately, we can prefinish both! Listed below, you will see our 9 frame options and whether they can be painted, stained, or both.



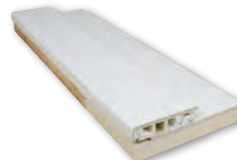
**PRIMED WOOD**  
(Paintable)

Our standard wood frame is made of finger-jointed pine and is pre-machined to accept MSystem components - weather-strip, sills, gaskets and corner seals. The entire frame is pre-primed, ready for paint.



**ENDURA - FRAMESAVER®**  
(Primed - Paintable)

A revolutionary wood composite material so resistant to rot and insect damage, we guarantee the frame for life with FrameSaver's® transferable Lifetime Warranty!



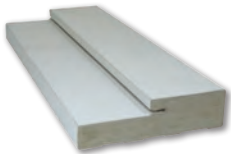
**ENDURA - FRAMESAVER® FUSIONFRAME**  
(Primed - Paintable  
Smooth and Textured)

Fusing together the benefits of composite and engineered-wood, FusionFrame delivers the strength and performance needed with a flawless finish. Helping installers overcome common installation challenges, delivering a better install.



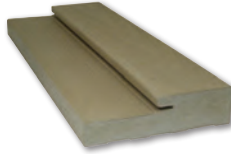
**WHITE CAPPED**  
(No paint required)

This ready to use pre-painted white frame is long-lasting and rot-free. With its strong screw holding power this frame will maintain its integrity today and tomorrow.



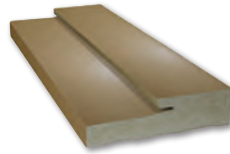
**SMOOTH COMPOSITE**  
(Paintable)

The closed cellular structure ensures door frame will not absorb or wick moisture, and prevent warping, rotting and splitting. Twice the screw holding power of traditional wood door frames.



**OAK GRAINED COMPOSITE**  
(Paintable & Stainable)

Oak grain poly-fiber door frame system that combines all the strength and convenience of wood with enhanced properties that make it moisture, rot and insect resistant.



**FIR GRAINED COMPOSITE**  
(Paintable & Stainable)

Fir grain poly-fiber door frame system that combines all the strength and convenience of wood with enhanced properties that make it moisture, rot, and insect resistant.



**MAHOGANY GRAINED COMPOSITE**  
(Paintable & Stainable)

Mahogany grain poly-fiber door frame system that combines all the strength and convenience of wood with enhanced properties that make it moisture, rot, and insect resistant.



**REPLACEMENT DOOR 18 GAUGE STEEL**  
(Paintable)

Our Steel Replacement Door is assembled on an 18 gauge steel frame that is pre-prepped and pre-primed. Reinforced to ensure a proper installation and provide increased security.

## CLADDING



**Crownline**  
Compatible with most clad window profiles

**Brickmould**  
Matches wood brickmould dimensions exactly



**Transoms**  
Clear and decorative glass in all shapes: rectangle, round top, elliptical, and springline.

## MAINTENANCE-FREE ALUMINUM ENTRY DOOR CLADDING



- Heavy Duty – resists denting
- No painting
- Limited lifetime warranty
- Storm door ready
- No exposed fasteners
- Entry doors, sidelites and transoms



# FRAMESAVER®

## WHY FRAMESAVER®

FrameSaver® Door Frames from Endura are simply the best door frames on the market. Patented composite bottom won't absorb water, warp, crack or rot and finishes and paints just like wood.

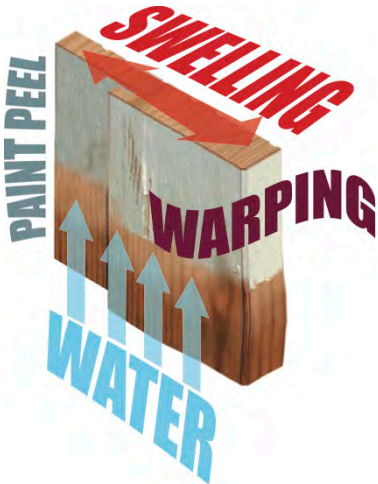
FrameSaver's finger-jointed wood composite protects the base of the frame from moisture exposure, and thus prevents water from wicking into the wood. Rot never has a chance to begin.

That's Performance Standard.

## FRAMESAVER® FEATURES

FIELD PROVEN: OVER A DECADE OF "NON-ROT" PERFORMANCE

1. FRAMESAVER® BRAND STAMPED RIGHT ONTO THE PRODUCT
  - Ensures top quality
2. FINISHES AND PAINTS JUST LIKE WOOD
3. PATENTED COMPOSITE BOTTOM WILL NOT ABSORB WATER OR ROT
  - Will not wick water or swell
  - Rot never begins
  - Resists mold and insects
4. FINGER-JOINTED CONSTRUCTION DELIVERS STRUCTURAL INTEGRITY
  - Extremely strong and durable



FRAMESAVER®  
PROTECTS YOU  
FOR LIFE.  
GUARANTEED.



2

4

1

3



FrameSaver  
ROT PROOF  
GUARANTEE

# FRAMESAVER® FUSIONFRAME™

## DOOR FRAME & INSTALLATION SYSTEM

FusionFrame™ delivers maintenance free performance and prefinished convenience, with the structural improvements you want, and the installation benefits you never thought possible. *Call for pricing.*



684GBG, (2) SL694GBG  
Shown in Fiberglass Smooth  
Brilliant White Paint



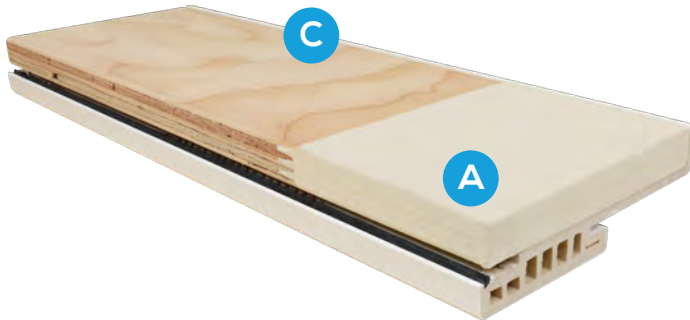
2020 Best of IBS new product finalist  
Premier Composite Frame System  
Overcomes installation challenges

- Installs in less time
- Corrects out of plumb conditions
- Engineered-wood manages deflection
- Brickmould compatible
- Supports Storm Doors & Side Lights
- Built in bubble level
- Hidden fastener technology
- Does not wick, rot, or warp

Patented technology

## SUPERIOR BASICS

- A. Maintenance-free performance:** FrameSaver Technology won't absorb water, warp, crack, or rot with insect protection
- B. Prefinished convenience:** With a paintable smooth white or stainable textured finish
- C. Structural rigidity:** Engineered core supports installation and resists sagging and bowing



Textured  
Stainable Finish

B

Smooth, Prefinished,  
Paintable White Finish

A

FUSION  
FRAME™

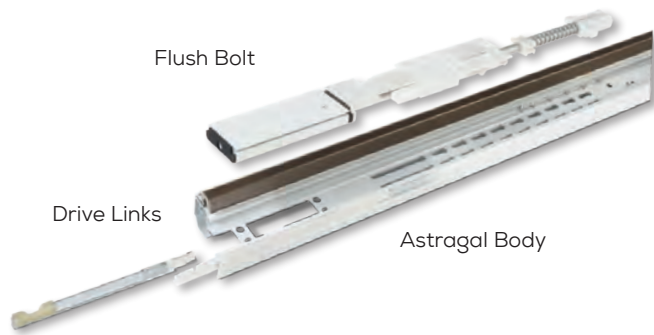
POWERED BY  
ENDURA  
DOOR COMPONENTS MADE IN THE USA



## MULTI-POINT ASTRAGAL (MPA)

MPA's cost-effective design works with most standard deadbolt packages, eliminating the need for expensive hardware, extensive machining and allowing for easy installation and retrofitting to existing door units.

- Three secure locking points stop air and water infiltration
- Ease of installation or retrofit
- Works with most standard deadbolt lock sets
- Flip Lever standard enhances sealing power
- 4-way adjustable strike



### INTUITIVE CUT DOWN AND ADJUSTMENT

Multi-Point Astragal and Flip Lever Astragal

The **Multi-Point Astragal** and **Ultimate Flip Lever™ Astragal** can be cut down by up to 7 inches to accommodate all applications.

## ULTIMATE FLIP LEVER™ ASTRAGAL

The **Ultimate Flip Lever™ Astragal** – One flip of the lever activates both Flush Bolts and the Floating Boot, eliminating the need for bending and reaching – a must-have for taller door systems.

### PATENTED DESIGN

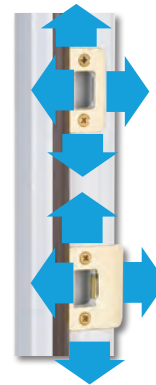
- Easy-to-use, enhanced accessibility
- Spring-loaded Floating Boot and Flush Bolts operate independently, allowing the Floating Boot to form a tight seal against the cap
- Standard in Multi-Point Locking Astragal and Trilennium® Compatible Astragals
- Upgrade option in Ultimate Astragal

### RETRACTABLE FLOATING BOOT

Lifts with the Flush Bolt to prevent excessive rubbing and wear that lead to poor performance with traditional boot-type seals.



### 4-WAY ADJUSTABLE STRIKE RETAINER



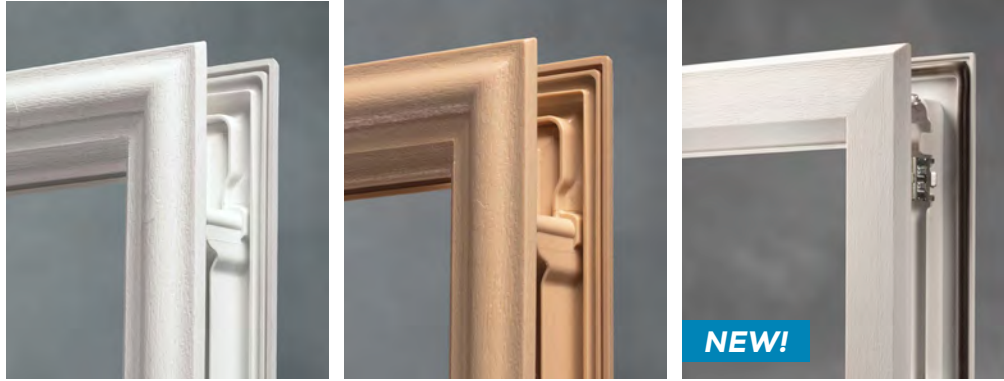
*Adjustable strike plates with hardware in place*

*Adjustable strike retainer available only on Flip Lever Upgrade and Multi-Point Astragals*

## TAKE DOUBLE DOOR PROTECTION TO THE ULTIMATE LEVEL



# GLASS-LITE FRAMES



FEATURE / BENEFIT	EVOLVE® White	EVOLVE® Oak	ZEEL White
FRAME MATERIAL	High Performance (HP®)	FiberPRO®	FiberMate Plus®
Compression seal/no squeeze out	•	•	•
Designed to reduce scalloping	•	•	•
Best defense against air/water infiltration	•	•	•
No screw plugs			•
Easy-install screw plugs	•	•	
UV Resistant	•	•	•
High heat tolerant			•
Paints without adhesion promoter		•	•
Stainable		•	•
No finishing required	•		
Flat Profile			•



## Meet ZEEL. A minimal design with endless opportunities.

**1.** ZEEL is a sleek, versatile frame designed to be stained or painted that blends seamlessly into the entry door, allowing the doorglass to take center stage. This clean, low-profile look offers an alternative to flush glazed doors that provides the benefits of a frame system with the style homeowners desire.

**2.** Traditional frames can warp when subject to severe temperature changes or direct sunlight exposure, especially when painted dark colors. **FiberMate Plus™** is our strongest material yet and exceeds performance expectations in extreme environments.

**3.** **Resolve®** sealant is immune to squeeze out and doesn't degrade over time, reducing service calls and warranty issues. This clean thermoset foam seal can be repositioned and stays consistent over time.

**4.** **ZEEL** eliminates the need for screws and cumbersome screw hole covers with an innovative clip system. This allows each frame to sit flush, streamlining installation and greatly reducing installation time and effort. This efficient installation offers an alternative to costly flush glazed doors.

**Note:** Zeel comes standard with designated Textured Privacy glass and configured clear LOW-E glass. Call for special order Zeel options.

# HARDWARE & ACCESSORIES

## EXTERIOR LOCKSETS

Box set finish options: Colonial Bronze, Satin Nickel



**Decorative Handle and Deadbolt**

- Solid brass 1 piece cylinder housing
- 1" throw deadbolt with hardened anti-saw rod



**Standard Levers**

- All metal construction
- 5 pin solid brass cylinder with nickel plated keys
- Cylinder removable for rekeying
- Tubular locks keyed together with single cylinder deadbolts



**Standard Knobs**



**Standard Deadbolt**

- Full 1" throw deadbolt with hardened steel rod insert
- 5 pin tumbler solid brass cylinder

## PEEPHOLE DOOR VIEWER & DOOR KNOCKERS WITH VIEWERS



**VIEW12CB**  
Colonial Bronze



**VIEW12SN**  
Satin Nickel

**Door Peephole Viewer**

- 180 degree viewing
- Adjusted to fit doors from 1-3/8" to 2-1/4" thick



**KNVW12CB**  
Colonial Bronze



**KNVW12SN**  
Satin Nickel

**Door Knocker with Viewer**

- 6" tall x 3" wide
- Mounting Hardware: Two 2" length brass screws included

## MAIL SLOTS



**SLOT133SN**  
Satin Nickel  
3-9/16" x 13"

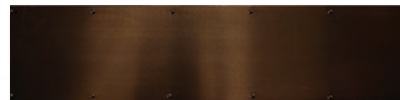


**SLOT133CB**  
Colonial Bronze  
3-9/16" x 13"

## KICK PLATES



**KPLT634SN**  
Satin Nickel  
6" x 34"



**KPLT634CB**  
Colonial Bronze  
6" x 34"

## DOOR HINGES

### TYPES



**Standard Hinge**



**Ball Bearing Hinge**



**Square Hinge**



**Spring Loaded**

### FINISHES - FINISH AVAILABILITY VARIES BY HINGE TYPE



**US-3/4\***  
Light Brass



**US-3**  
Bright Brass



**US-26**  
Bright Chrome



**US-26D\***  
Dull Chrome



**LUS-15\***  
Dull Nickel



**US-15A\***  
Antique Nickel



**US-5\***  
Antique Brass



**US-10BD\***  
Colonial Bronze - Dark



**US-19**  
Flat Black



**US-P\***  
White Primed

\*Available in Spring Loaded

~ Available in Spring Loaded and Ball Bearing as US-15 Satin Nickel

# TRILENNIUM®

## TRILENNIUM® – MULTI-POINT LOCKING SYSTEM

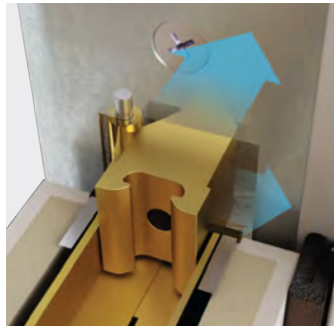
Trilennium® delivers three times the strength, the security and the performance with one multi-point locking system, resulting in maximum peace of mind and homeowner satisfaction.



### PROTECTION

Trilennium delivers the strength of 3 full dead-bolts for uncompromised protection.

No weak hooks or delivering catches, only tested, proven strength.



### PERFORMANCE

Trilennium corrects misalignment in 3 different directions, even fighting deflection when unlocked for lasting, error-free operation.



### EASY OPERATION

Unlike other systems, Trilennium is easy to use, activating with a single turn of the key or thumb-turn, and releasing with just a single turn of the interior handle.



### STRENGTH

Unlike other competitors, Trilennium's one-piece I-Beam lock construction is so strong, it even strengthens the door panel.

## TRILENNIUM® HARDWARE COLLECTION

For optimum performance with our locking system, Trilennium® hardware combines elegant design with precision engineering for beautiful, reliable performance. Hardware, active and inactive, is available for entry, patio and passage doors in a variety of styles and finishes.



### ECLIPSE

Shown in Satin Nickel

\*Available in Victorian Bronze – In-Stock



### PINNACLE

Shown in Victorian Bronze

**SPECIAL ORDER**  
Available in 3-6 Weeks



### HORIZON

Shown in Bright Brass

**SPECIAL ORDER**  
Available in 3-6 Weeks



### GRIP SET

Shown in Victorian Bronze

**SPECIAL ORDER**  
Available in 3-6 Weeks



Trilennium® compatible hardware is also available from EMTEK® and Rocky Mountain Hardware®.



# PET DOORS

In keeping with the idea that MMI DOOR strives to be our customer's single source for all of their door needs, we now offer 3 different sizes of Pet Doors - Medium, Large, and X-Large. Each of the three Pet Doors are pictured below. Our Pet Doors are manufactured by PetSafe®, a leading provider of Pet Products.

## GIVE YOUR PETS THE FREEDOM THEY DESERVE!

- Durable Construction
- Simple installation instructions included
- Solid aluminum frame with closing panel
- Intended for heavy use and multiple pet homes
- Flexible, soft flap with UV sun protection
- Great for Storm, Wood, PVC and Steel Doors
- Interior and Exterior applications
- 1 Year Warranty

### OTHER SUGGESTED FIELD INSTALLATIONS:



Wood, Storm,  
PVC & Steel Walls  
3/8"-2" Thick



Interior  
Applications



Alternative  
Applications



<p><b>Medium</b> 1 - 40 lbs. 8-1/4" x 12-1/4" (Flap Opening)</p>	<p><b>Large</b> 1 - 100 lbs. 10-1/4" x 16-1/4" (Flap Opening)</p>	<p><b>X-Large</b> 12 - 220 lbs. 13-3/4" x 23-3/4" (Flap Opening)</p>



Pet Doors  
Patio & Double Doors  
Fire-Rated Doors  
Severe Weather Fiberglass Doors  
Architectural Collection  
Simulated Divided Lites Collection  
Spotlights™ Collection

# PATIO DOORS

**BUILT FOR STABILITY, STRENGTH, RELIABILITY AND ENERGY EFFICIENCY. MANY OF OUR UNITS QUALIFY FOR THE ENERGY STAR PROGRAM. CHOOSE FROM GRAINED FIBERGLASS, SMOOTH FIBERGLASS OR STEEL.**



**(2) 59 LOW-E**  
Shown in Fiberglass Smooth Brilliant White Paint

The difference between Patio and Double Doors has always been a bit confusing. MMI DOOR defines Patio Doors as a two or three door unit with one active panel and one or two stationary panels. The operating panel will typically be hinged on the center mull post. A Double Door opens in the middle and has one "active" door and one "inactive" door. The inactive panel is anchored by an astragal that can be released to allow both doors to open freely.

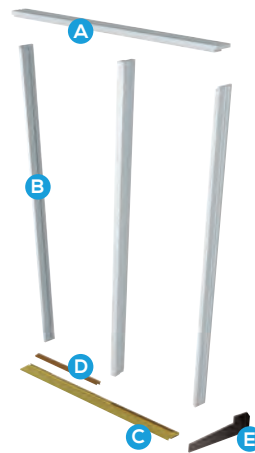


### Patio Doors

One active panel and one or two stationary doors

### Double Doors

Also called "French Doors" Double doors open in the middle and both panels can be activated by releasing the astragal



(Example is a Patio Door)



**Continuous head** with non-invasive routing provide exceptional strength



One piece mulls feature superior strength, a perfect fit and no additional finishing



**Continuous sills** give added strength beneath the mull with the continuous seal along the door unit

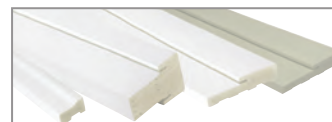


Our mull systems include inactive seats engineered for perfect panel placement



Sill gasket provides a water tight seal

Inactive patio door panels are sealed with glazing tape (no caulk) No re-caulking required resulting in a better appearance



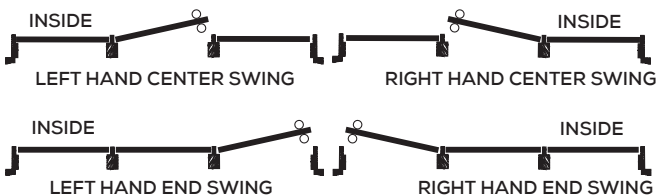
Available with composite, no-rot frames!

## PATIO HANDINGS

### 2 DOOR



### 3 DOOR



## TRANSOMS OPTIONS



Model	Glass Only Size	Description
TRAN7413RLE	72-1/4" x 11-7/8"	Transom Clear Low-E glass
TRAN7513RLE	73-1/4" x 11-7/8"	Transom Clear Low-E glass

Model	Glass Only Size	Description
TRAN7413RIMLE	72-1/4" x 11-7/8"	Transom Low-E glass w/GBG
TRAN7513RIMLE	73-1/4" x 11-7/8"	Transom Low-E glass w/GBG

# PATIO DOORS

## 6/8 - 2 DOOR



**59\***  
(2) 22"x64"



**61\***  
(2) 22"x64"



**686GBG\***  
(2) 22"x64"



**686GBG Contour~**  
(2) 22"x64"



**686PIM**  
(2) 22"x64"



**686SDL~**  
(2) 22"x64"



**686RLB~**  
(2) 22"x64"



**686RLB PET~**  
22"x64", 22"x36"



**689RLB GBG~**  
(2) 22"x64"



**686BLC~**  
(2) 22"x64"



**686CHI~**  
(2) 22"x64"




**686RN~**  
(2) 22"x64"



**686VPR~**  
(2) 22"x64"



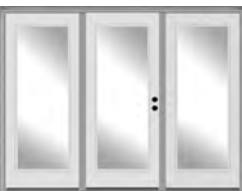
**686MG~**  
(2) 22"x64"

\* - Available in Low-E   
~ - Low-E only

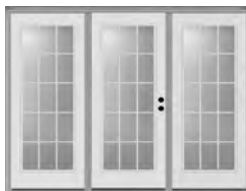
\*Textured glass offered with Zeel frame. All Patio Doors are offered with the door hinge on the frame side at no extra cost at your request. Note: Add "P-" in front of model number when ordering Patio Doors.

8/0 door options available

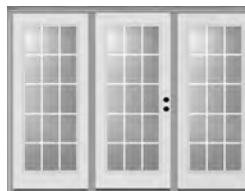
## 6/8 - 3 DOOR



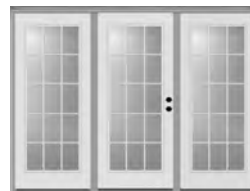
**59\***  
(3) 22"x64"



**61\***  
(3) 22"x64"



**686GBG\***  
(3) 22"x64"



**686GBG Contour~**  
(3) 22"x64"



**686PIM**  
(3) 22"x64"



**686SDL~**  
(3) 22"x64"



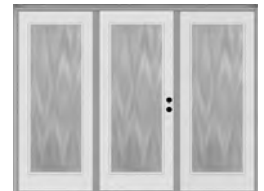
**686RLB~**  
(3) 22"x64"



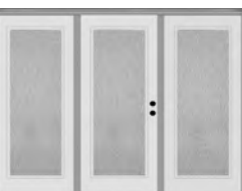
**689RLB GBG~**  
(3) 22"x64"



**686BLC~**  
(3) 22"x64"



**686CHI~**  
(3) 22"x64"



**686RN~**  
(3) 22"x64"



**686VPR~**  
(3) 22"x64"



**686MG~**  
(3) 22"x64"

\* - Available in Low-E  
~ - Low-E only

\*Textured glass offered with Zeel frame. All Patio Doors are offered with the door hinge on the frame side at no extra cost at your request. Note: Add "P-" in front of model number when ordering Patio Doors.

8/0 door options available

# RETRACTABLE SCREENS



**SCRNFULLRET30**  
Shown in White

## LET THE FRESH AIR IN, KEEP EVERYTHING ELSE OUT.

- Mesh screen allows for maximum fresh air circulation
- In-track Velcro holds the screen tight, keeping insects out
- Woolpile fin seal provides added seal on door edge
- Sleek handle design with release lever
- Enhanced slide guide for smooth operation and stability
- Attractive white finish to match any home design



**SINGLE**

### **INSWING FULL-SIZE RETRACTABLE SCREEN SCRNFULLRET30**

3/0 x 6/8 full-size assembly for single door

Screen height is 82" and fits openings up to 38" wide



**DOUBLE**

### **INSWING FULL-SIZE RETRACTABLE SCREEN SCRNFULLRET60**

6/0 x 6/8 full-size assembly for double door

Screen height is 82" and fits openings up to 74<sup>1/4</sup>" wide



**DOUBLE**

### **INSWING TRUFIT RETRACTABLE SCREEN SCRNRETRORET60**

6/0 x 6/8 TruFit assembly for double door

Screen height is 79<sup>3/4</sup>" and fits openings up to 72" wide



*Notice: Responsibility for the care and maintenance of the unit will be solely on the purchaser. Any resulting damage to the screen mesh component from improper use or care shall be at the discretion of the purchaser to replace at a cost with an available screen mesh cartridge.*

*Retractable screens fit some configurations for outswing doors. Please call for configurability.*





# TRUFIT REPLACEMENT MAJESTIC STEEL

TruFit Replacement Patio Doors are sized to correctly fit the opening of worn out, sliding patio doors. No custom sizing or extensive carpentry work is necessary. Save time and money while gaining the perfect look that your home deserves.



## UNIT INCLUDES:

- 4-9/16" Primed Frame
- Primed Brickmould
- One Piece Primed Mull Post (Patio)
- One Piece Flip Lever Astragal (Double)
- One Piece Composite Sill
- One Piece Continuous Header
- Wood Edge
- 3 Brass Hinges



Available with Composite No Rot Frames!

## SAVE TIME AND EFFORT

TruFit fits in the frame of your old sliding door with easy installation!



(2) P-61  
Shown in TruFit Majestic Steel Brilliant White Paint

DOORS		Patio Doors	Double French Doors
		2 Door	
6/8 MODELS UNIT SIZES		71-1/2" X 79-1/2"	70-1/2" X 79-1/2"
	<b>P-59</b> (1 Lite)	•	•
	<b>P-59 Low-E</b> (1 Lite)	•	•
	<b>P-61</b> (15 Lite Standard Grid)	•	•
	<b>P-686GBG</b> (15 Lite Internal Muntins)	•	•
	<b>P-686GBG Low-E</b> (15 Lite Internal Muntins)	•	•
	<b>P-686RLB</b> (Internal Blinds - Tilt, Raise and Lower)	•	•
	<b>P-686RLB Low-E</b> (Internal Blinds - Tilt, Raise and Lower)	•	•
	<b>P-686RLB GBG Low-E</b> (15 Lite Internal Muntins with Internal Blinds - Tilt, Raise and Lower)	•	•



15 Lite RLBGBG  
White or Tan  
Grids between Glass



1 Lite



Blinds Between Glass  
Raise, Lower & Tilt



15 Lite GBG  
White or Tan  
Grids between Glass

Please refer to page 16 for hardware options.

# FIRE-RATED DOORS

RESIDENTIAL STYLING, COMMERCIAL GRADE SAFETY. MMI DOOR OFFERS  
A COMPREHENSIVE LINE OF 20 AND 90 MINUTE FIRE RATED DOOR UNITS IN FIBERGLASS AND STEEL.

**FIRE RATING 20 MIN**

## FIRE DOORS ON 20 MINUTE WOOD FRAMES



Fiberglass Smooth 6 Panel  
Fiberglass Smooth 2 Panel  
Fiberglass Smooth 2 Panel Archtop  
Fiberglass Smooth 2 Panel Archtop Planked  
Fiberglass Smooth 10 SHK 1 Panel  
Fiberglass Smooth 20 SHK 2 Panel  
Fiberglass Smooth 30 SHK 3 Panel

**FIRE RATING 90 MIN**

## FIRE DOORS ON 90 MINUTE STEEL FRAMES



Majestic Steel Flush  
Majestic Steel 2 Panel  
Majestic Steel 4 Panel  
Majestic Steel 6 Panel

### WARRANTY

- 10-Year coverage on exterior steel door slabs for defects in material and workmanship
- 1-Year coverage on door frames for defects in material and workmanship

### COMMERCIAL PRODUCTS

MMI DOOR offers a full line of commercial doors, frames and hardware in stock for immediate delivery. Many of these items are adaptable to our residential products in this catalog. You may want to consider self closing hinges, automatic door closers or panic devices for the choices above. Please refer to our commercial brochure for further details.



Majestic Steel 2 Panel Archtop  
Majestic Steel 10 CRF 1 Panel  
Majestic Steel 20 CRF 2 Panel  
Majestic Steel 30 CRF 3 Panel

**FIRE RATING 20 MIN**

# FIRE-RATED DOORS

## PREHUNG PRIMED WOOD FRAME UNITS



Fiberglass Smooth FS21 20M  
Fiberglass Smooth FS20 20M  
Fiberglass Smooth FS22 20M  
Fiberglass Smooth FS200 20M  
Fiberglass Smooth FS10 SHK 20M  
Fiberglass Smooth FS20 SHK 20M  
Fiberglass Smooth FS30 SHK 20M

### UNITS INCLUDE:

- 4-9/16" prime frame
- Primed brickmould
- High dam composite adjustable sill
- Compression weatherstrip
- 3 standard brass hinges
- 20 minute fire rated labeled door

### PREHUNG OPTIONS:

#### PREP OPTIONS:

- 2-1/8" Deadbolt Prep
- 1/2" Peep Prep
- 1/2" Satin Nickel Peep Prep & Install

#### FRAME OPTIONS:

- 5-1/4" Frame
- 6-9/16" Frame
- 4-9/16" 20 Minute Frame
- 7-1/4" 20 Minute Frame
- No Brick Mould

### SILL OPTIONS:

- Fixed Sill
- Low Profile Sill (ADA Compliant)

### HINGE OPTIONS:

- (3) US-26D Brushed Chrome Hinges
- (2) US-3/4 Brass Spring Hinges
- (2) US-15 Satin Nickel Spring Hinges
- (2) US-15A Antique Nickel Spring Hinges
- (2) US-26D Brushed Chrome Spring Hinges
- 3rd Spring Hinge

Spring Hinges include a 3rd, standard hinge.



**10 CRF 90M (Special Order)**  
Shown in Majestic Steel-90 Minute Graystone White Paint

### Unit Dimensions

Frame Size	Width	Height
2/8 x 6/8	33-1/2"	81-5/8"
3/0 x 6/8	37-1/2"	81-5/8"

Low profile (ADA Compliant) sill units deduct 3/4" from unit dimensions

**Note:** All 20M FS flat panel shaker doors available with no sticking and all 90M MJ flat panel craftsman doors available with craftsman sticking.



**FIRE RATING 90 MIN**

# FIRE-RATED DOORS

Pet Doors

Patio & Double Doors

Fire-Rated Doors

Severe Weather Fiberglass Doors

Architectural Collection

Simulated Divided Lites Collection

Spotlights™ Collection

## TIMELY AK-SERIES ADJUSTABLE STEEL FRAME PREHUNG UNITS



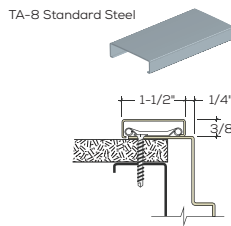
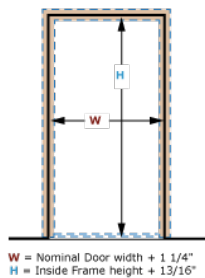
Majestic Steel 90M MJ-1-90M*	Majestic Steel 90M MJ-20-90M	Majestic Steel 90M MJ-21-90M*	Majestic Steel 90M MJ-22-90M	Majestic Steel 90M MJ-40-90M	Majestic Steel 10 CRF 90M 1 Panel	Majestic Steel 20 CRF 90M 2 Panel	Majestic Steel 30 CRF 90M 3 Panel
---------------------------------	---------------------------------	----------------------------------	---------------------------------	---------------------------------	--------------------------------------	--------------------------------------	--------------------------------------

\*2/6 is available in the MJ-1 and MJ-21 in frame sizes 4-1/2" to 5-1/2" only.

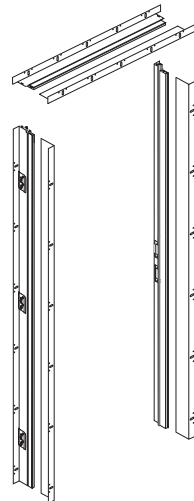
### Unit Dimensions

Frame Size	Width	Standard Height	ADA Height
2/6 x 6/8	30"	80-7/8"	80"
2/8 x 6/8	32"	80-7/8"	80"
2/10 x 6/8	34"	80-7/8"	80"
3/0 x 6/8	36"	80-7/8"	80"

### Rough Opening



For AK Adjustable Kerfed frames, the rough opening must be 13/16" higher than the total inside frame height. Since this frame is often pre-hung with a sill and bottom sweep, the height may vary.



### FRAME-UP ADJUSTABLE KERFED AK-SERIES

Our AK-Series Frame is designed specifically for the Residential Market (and light Commercial applications) where weatherstripping, thresholds, and pre-hanging are common requirements. With MMI's fire rated door pre-hung in a Timely AK-Series frame, this entire unit can be installed at one time. AK-Series frames are also the solution for house to garage openings where fire ratings and security are essential.

Accommodates doors 1-3/4" thick, weighing up to 250lbs and accepts TA-8 metal or wood casings for finishing.

### UNITS INCLUDE:

- 20 Gauge galvanized primed steel
- Adjustable Throat: 4-1/2" to 5-1/2", 5-1/2" to 6-1/2", 6-1/2" to 7-1/2", 8-1/2" to 9-1/2", 9-1/2" to 10-1/2"
- Lock strike preparation: 2-1/4" full lip strike, 2-1/2" T-Strike, 2-3/4" deadbolt, 4-7/8" ASA

- Prepped for 2 sets of steel casing TA-8 or a wood casing
- Primed in white
- Hinge Prep: Accepts three (3) 4" 5/8" radius hinges

### PREHUNG OPTIONS:

#### PREP OPTIONS:

- 2-1/8" Deadbolt Prep
- 1/2" Peep Prep
- 1/2" Satin Nickel Peep Prep & Install

#### SILL OPTIONS:

- Low Profile Sill (ADA Compliant)

#### HINGE OPTIONS:

- (2) US-3/4 Brass Spring Hinges
- (2) US-15 Satin Nickel Spring Hinges
- (2) US-15A Antique Nickel Spring Hinges
- (2) US-26D Brushed Chrome Spring Hinges

#### CASING OPTIONS:

- Steel Snap On Casing Per Door Side

# SEVERE WEATHER FIBERGLASS ENTRY DOORS

Our severe weather fiberglass smooth and oak grained fiberglass doors are constructed with full length composite stiles. The top and bottom rails prevent any water penetration in all six sides. The unit will not, warp, rot, dent, or split and are virtually maintenance free.

Decorative glass is available and is independently tested by ODL to meet Florida and Texas wind-borne debris risks and comes with an aluminum frame for enhanced strength and durability.

Our severe weather door system is approved for use in severe weather door systems that meet Florida code FL17347, and are certified by NAMI. Please call for design and quote.

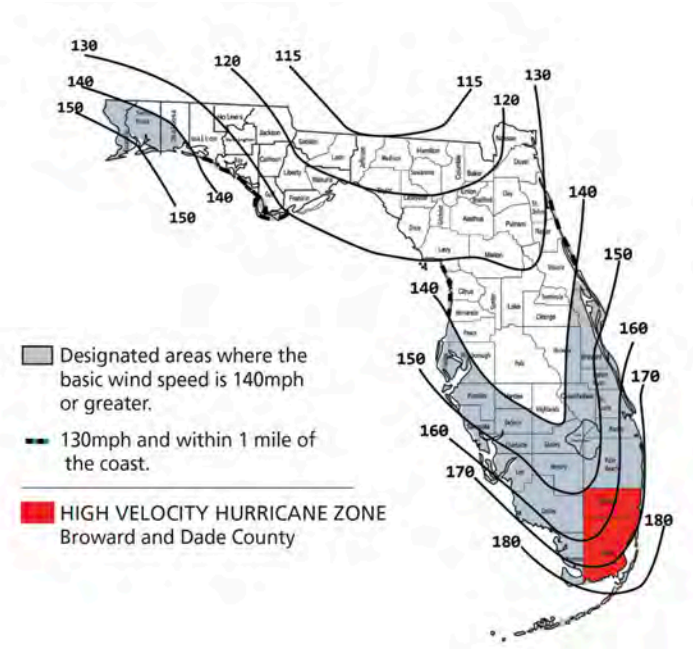
HIGH VELOCITY HURRICANE ZONE (HVHZ)  
Broward and Dade County are not supported.

Aluminum Flat Profile Frame



**SWFS 686HM**  
Shown in Severe Weather  
Fiberglass Smooth  
Naval Point

## FLORIDA WIND-BORNE DEBRIS REGION FOR RISK CATEGORY II BUILDINGS



## TEXAS FIRST TIER COASTAL COUNTIES



# SW PANEL AND CLEAR GLASS DOORS

6/8



**SWFG 21**  
6 Panel  
2/8 x 6/8  
3/0 x 6/8



**SWFG 110**  
2 Panel  
3/0 x 6/8



**SWFG 158**  
9 Panel  
3/0 x 6/8



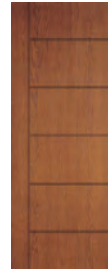
**SWFG 140**  
4 Panel  
3/0 x 6/8



**SWFG 400**  
6 Panel  
3/0 x 6/8



**SWFG 46MDRN**  
4 Panel Grooved  
3/0 x 6/8



**SWFG 51MDRN**  
7 Panel  
3/0 x 6/8



**SWFG 59**  
Low-E Glass  
2/8 x 6/8  
3/0 x 6/8



**SWFG 122**  
Low-E Glass  
2 Panel  
3/0 x 6/8



**SWFS 59 Low-E**  
Shown in Severe Weather  
Fiberglass Smooth  
Graystone Paint

8/0

**SPECIAL ORDER**  
Available in 6-8 Weeks



**SWFG 21**  
6 Panel  
3/0 x 8/0



**SWFG 300**  
3 Panel  
3/0 x 8/0



**SWFG 46MDRN**  
4 Panel Grooved  
3/0 x 8/0



**SWFG 51MDRN**  
7 Panel  
3/0 x 8/0



**SWFG 59**  
Low-E Glass  
3/0 x 8/0

6/8



**SWFS 20**  
2 Panel  
3/0 x 6/8



**SWFS 21**  
6 Panel  
2/8 x 6/8  
3/0 x 6/8



**SWFS 22**  
2 Panel  
2/8 x 6/8  
3/0 x 6/8



**SWFS 31**  
3 Panel  
3/0 x 6/8



**SWFS 40**  
4 Panel  
2/8 x 6/8  
3/0 x 6/8



**SWFS 110**  
2 Panel  
3/0 x 6/8

8/0

**SPECIAL ORDER**  
Available in 6-8 Weeks



**SWFS 140**  
4 Panel  
3/0 x 6/8



**SWFS 158**  
9 Panel  
3/0 x 6/8



**SWFS 200**  
2 Panel Planked  
2/8 x 6/8  
3/0 x 6/8



**SWFS 400**  
6 Panel  
3/0 x 6/8



**SWFS 59**  
Low-E Glass  
2/8 x 6/8  
3/0 x 6/8



**SWFS 122**  
2 Panel  
Low-E Glass  
2/8 x 6/8  
3/0 x 6/8



**SWFS 300**  
3 Panel  
3/0 x 8/0



**SWFS 59**  
Low-E Glass  
3/0 x 8/0

Pet Doors

Patio & Double  
Doors

Fire-Rated  
Doors

Severe Weather  
Fiberglass Doors

Architectural  
Collection

Simulated Divided  
Lites Collection

Spotlights™  
Collection

# IMPACT-RESISTANT LAMINATED GLASS

ODL's patented frame design, which is mechanically fastened in the corners to prevent flex, adds strength to the door. With a classic flat 3/8" low profile frame, the narrow aluminum extrusion adds strength. The natural contours provide a traditional style and a white powder coat provides a polished finish that can be painted.

Decorative Doorglass, Blinds and Grilles are sealed between impact-resistant laminated glass on the exterior, and tempered safety glass on the interior.



## MISSILE IMPACT TESTED



The Level D missile impact test fires an 8-foot long 2"x 4" at 50 feet-per-second at the door glass and door slab. The entire unit must remain intact through 9,000 pressure cycles, and also pass water-infiltration, structural loading, and forced air-infiltration tests.

## SEVERE WEATHER PORTFOLIO

Special order: "\*" in the table relates to available product. To configure: Take the door model number and add the glass, mini blind, or grille extension.

Example: SWFS 607-HM = Severe Weather Smooth Fiberglass with 22" x 48" Heirlooms glass

SEVERE WEATHER FIBERGLASS DOORS									
DECORATIVE GLASS					TEXTURED PRIVACY GLASS			BETWEEN GLASS OPTIONS	

Model	Grain	Glass Size	Door Width	SEVERE WEATHER FIBERGLASS DOORS										
				-BFT (Beaufort)	-GRC (Grace)	-HM (Heirlooms)	-ME (Majestic)	-PEM (Pembrook)	-BLC (Blanca)	-CHI (Chinchilla)	-RN (Rain)	-RLB (Mini Blinds)	-GBG (Grilles Between Glass)	
SWFS 607-xx	Smooth	22" x 48"	2/8			*				*	*	*		*
			3/0			*				*	*	*		*
SWFG 607-xx	Oak	22" x 48"	2/8			*				*	*	*		*
			3/0			*				*	*	*		*
SWFS 684-xx	Smooth	22" x 36"	2/8	*		*	*	*	*	*	*	*	*	*
			3/0	*		*	*	*	*	*	*	*	*	*
SWFG 684-xx	Oak	22" x 36"	2/8	*		*	*	*	*	*	*	*	*	*
			3/0	*		*	*	*	*	*	*	*	*	*
SWFS 686-xx	Smooth	22" x 64"	2/8	*	*	*	*	*	*	*	*	*	*	*
			3/0	*	*	*	*	*	*	*	*	*	*	*
SWFG 686-xx	Oak	22" x 64"	2/8	*	*	*	*	*	*	*	*	*	*	*
			3/0	*	*	*	*	*	*	*	*	*	*	*
SWFS 694-xx	Smooth	7" x 64"	12"	*	*	*	*	*	*	*	*	*	*	*
			14"	*	*	*	*	*	*	*	*	*	*	*
SWFG 694-xx	Oak	7" x 64"	12"	*	*	*	*	*	*	*	*	*	*	*
			14"	*	*	*	*	*	*	*	*	*	*	*
SWFS 612-xx	Smooth	22" x 80"	3/0	*	*	*	*	*	*	*	*	*	*	*
			3/0	*	*	*	*	*	*	*	*	*	*	*
SWFG 612-xx	Oak	22" x 80"	3/0	*	*	*	*	*	*	*	*	*	*	*
			3/0	*	*	*	*	*	*	*	*	*	*	*
SWFS 493-xx	Smooth	8" x 80"	12"	*	*	*	*	*	*	*	*	*	*	*
			14"	*	*	*	*	*	*	*	*	*	*	*
SWFG 493-xx	Oak	8" x 80"	12"	*	*	*	*	*	*	*	*	*	*	*
			14"	*	*	*	*	*	*	*	*	*	*	*
SWFF 866-xx	Fir	22" x 15"	2/8					*	*	*	*			
			3/0					*	*	*	*			

All Severe Weather products are available via special order. Please call for pricing.

# SW FIBERGLASS DOORS

6/8



**SWFS 607 HM**  
22" x 48"



**SWFS 607 BLC**  
22" x 48"



**SWFS 607 CHI**  
22" x 48"



**SWFS 607 RN**  
22" x 48"



**SWFS 607 GBG**  
22" x 48"



**SWFS 684 BFT**  
22" x 36"



**SWFS 684 HM**  
22" x 36"



**SWFS 684 ME**  
22" x 36"



**SWFS 684 BLC**  
22" x 36"



**SWFS 684 CHI**  
22" x 36"



**SWFS 684 RN**  
22" x 36"



**SWFS 684 RLB**  
22" x 36"



**SWFS 684 GBG**  
22" x 36"



**SWFS 686 BFT**  
22" x 64"



**SWFS 686 GRC**  
22" x 64"



**SWFS 686 HM**  
22" x 64"



**SWFS 686 ME**  
22" x 64"



**SWFS 686 PEM**  
22" x 64"



**SWFS 686 BLC**  
22" x 64"



**SWFS 686 CHI**  
22" x 64"



**SWFS 686 RN**  
22" x 64"



**SWFS 686 RLB**  
22" x 64"



**SWFS 686 GBG**  
22" x 64"



**SWFS 694 BFT**  
7" x 64"



**SWFS 694 GRC**  
7" x 64"



**SWFS 694 HM**  
7" x 64"



**SWFS 694 ME**  
7" x 64"



**SWFS 694 PEM**  
7" x 64"



**SWFS 694 BLC**  
7" x 64"



**SWFS 694 CHI**  
7" x 64"



**SWFS 694 RN**  
7" x 64"



**SWFS 694 RLB**  
7" x 64"



**SWFS 694 GBG**  
7" x 64"

8/0



**SWFS 612 BFT**  
22" x 80"



**SWFS 612 GRC**  
22" x 80"



**SWFS 612 HM**  
22" x 80"



**SWFS 612 ME**  
22" x 80"



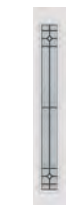
**SWFS 612 PEM**  
22" x 80"



**SWFS 612 BLC**  
22" x 80"



**SWFS 612 CHI**  
22" x 80"



**SWFS 493 BFT**  
8" x 80"



**SWFS 493 GRC**  
8" x 80"



**SWFS 493 HM**  
8" x 80"



**SWFS 493 ME**  
8" x 80"



**SWFS 493 PEM**  
8" x 80"



**SWFS 493 BLC**  
8" x 80"



**SWFS 493 CHI**  
8" x 80"



**SWFS 493 RLB**  
8" x 80"



**SWFS 493 GBG**  
8" x 80"

6/8 Fir



**SWFF 866 PEM\***  
22" x 15"



**SWFF 866 BLC\***  
22" x 15"



**SWFF 866 CHI\***  
22" x 15"



**SWFF 866 RN\***  
22" x 15"



**SWFF 866 GBG\***  
22" x 15"

\* Dentil Shelf Available

Pet Doors

Patio & Double  
Doors

Fire-Rated  
Doors

Severe Weather  
Fiberglass Doors

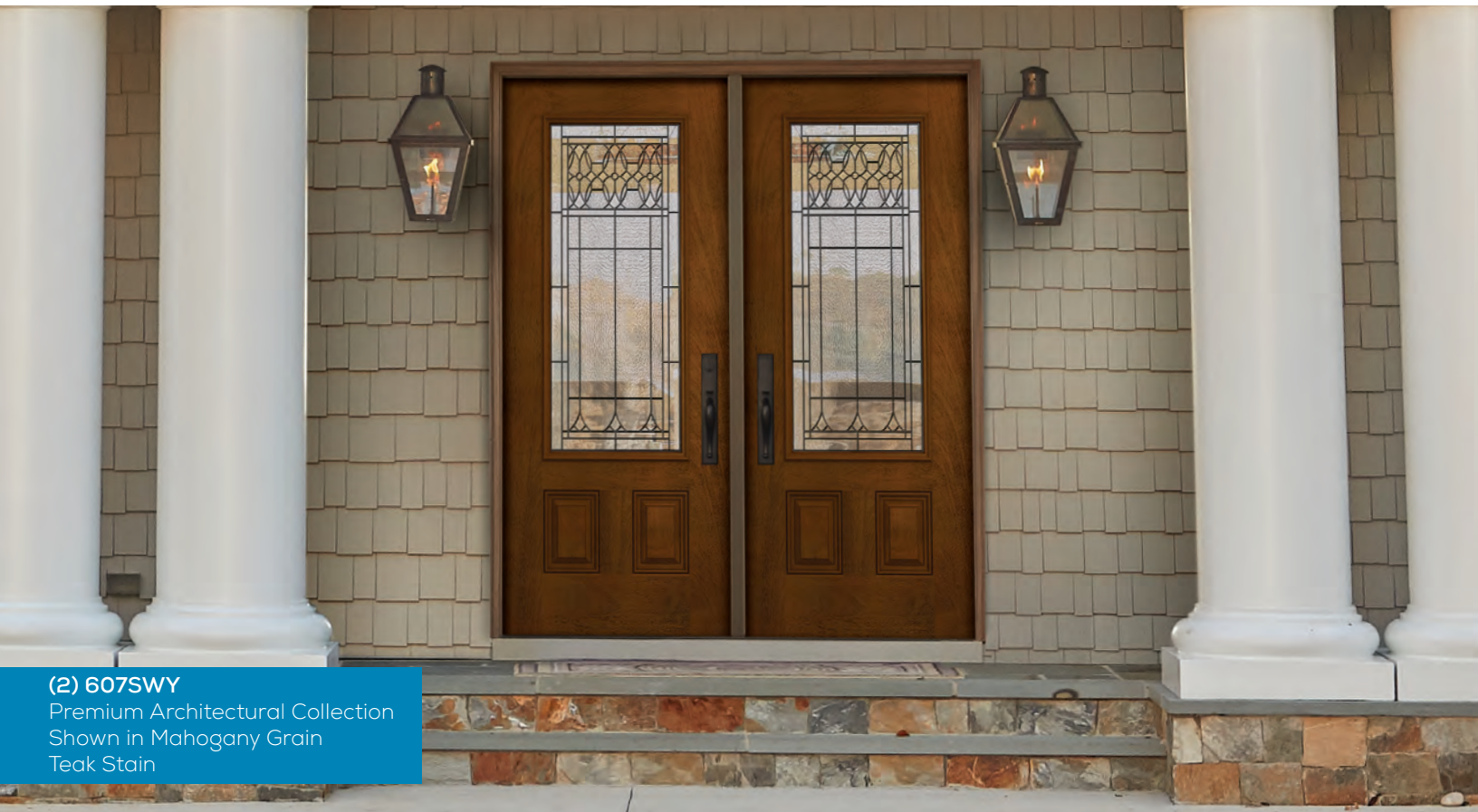
Architectural  
Collection

Simulated Divided  
Lites Collection

Spotlights™  
Collection

# ARCHITECTURAL COLLECTION

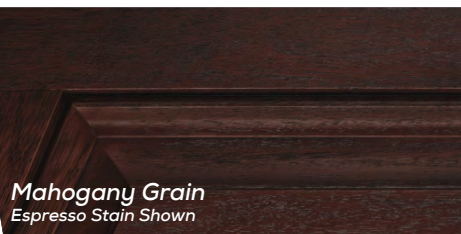
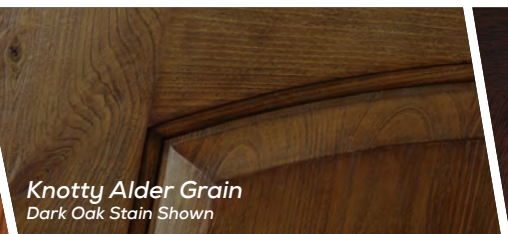
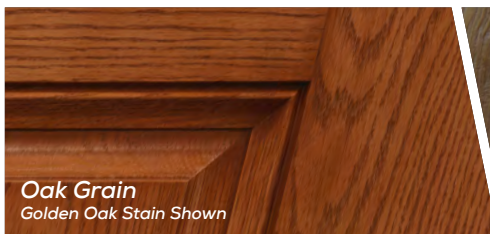
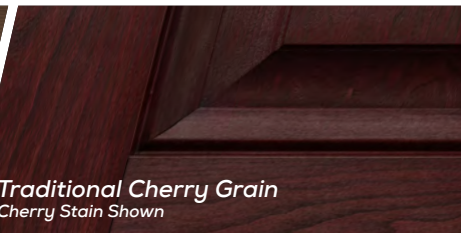
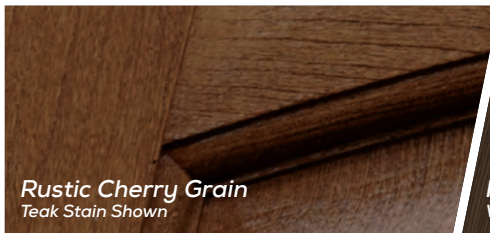
MMI DOOR's Architectural™ Collection is a premium line of fiberglass doors and matching fiberglass components featuring an **authentic woodgrain replication** made possible by unique NVD (nickel vapor deposition) technology. Each door begins with hand-selecting the most beautiful pieces of wood to build a real wood door. A silicone casting then picks up the woodgrain, and with NVD technology, the **finest details are transferred** into a door mold, atom-by-atom. The result is a fiberglass door that **replicates natural woodgrain** characteristics and is **virtually indistinguishable** from real wood. **Limited Lifetime Warranty.**



(2) 607SWY  
Premium Architectural Collection  
Shown in Mahogany Grain  
Teak Stain

**SPECIAL ORDER.** Prefinished doors delivered in an estimated 6-8 weeks.

## GRAINS & STAINS





# ARCHITECTURAL COLLECTION

Pet Doors

Patio & Double Doors

Fire-Rated Doors

Severe Weather Fiberglass Doors

Architectural Collection

Simulated Divided Lites Collection

Spotlights™ Collection

## DELIVERING A COMPLETE FIBERGLASS SYSTEM TO YOUR DOOR

THE BEAUTY OF WOOD WITH THE DURABILITY OF FIBERGLASS.

### STRENGTH

A pair of beefy 4.125" stiles run down the sides of our doors. Supported by 3.5" of laminated strand lumber. LSL is one of the strongest, straightest and most stable engineered wood fiber products available. This prevents our doors from **warping** and increases your hardware options.

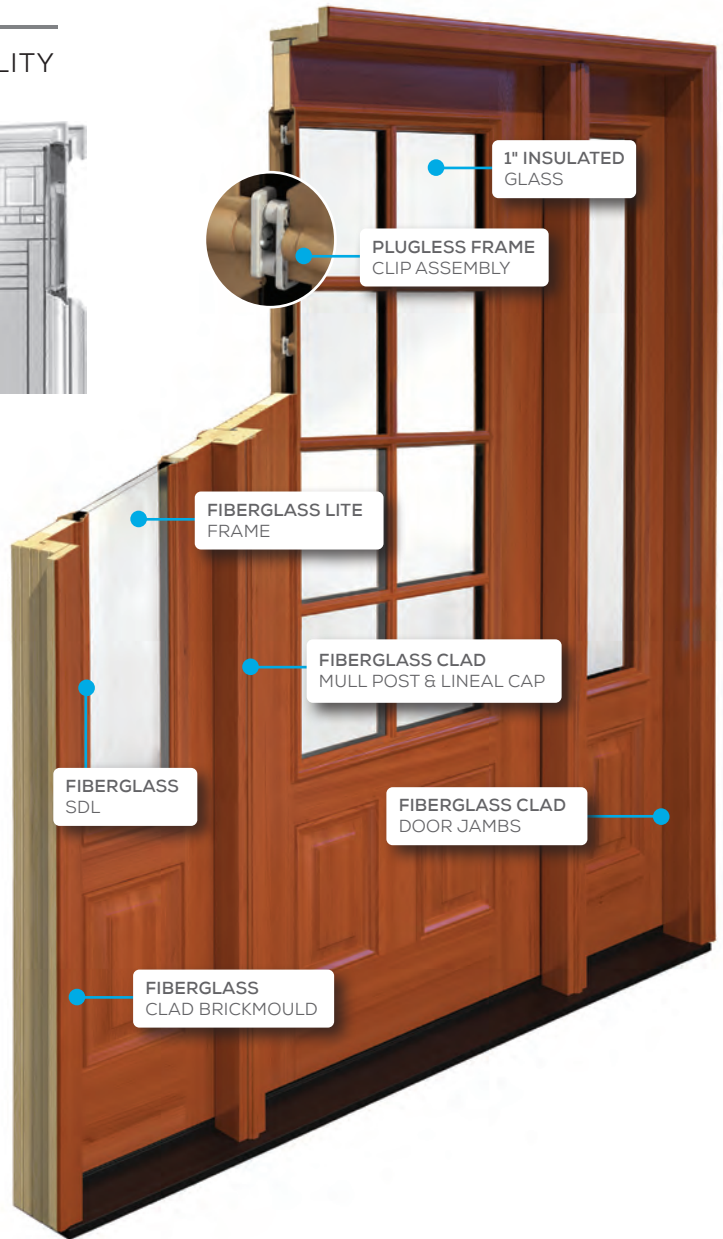


### HIGH DEFINITION

To produce the **highest definition of wood-grain fiberglass doors**, it starts with high quality fiberglass that is transformed using our unique **NVD technology**. Our skins have a minimum thickness of .09", all the way up to .175" for stainless steel inlays.

### PERFORMANCE

All of our doors are insulated with high density, CFC free, polyurethane foam (between 2.2 to 2.5). Our formula improves **energy efficiency & sound abatement**.



- Mastergrain's unique **NVD technology** produces the most genuine look of real wood in fiberglass without the negative aspects of a wood or steel.
- **Does NOT rot or warp** like wood doors and requires less maintenance.
- **Does NOT rust or dent** like steel doors.
- Excellent grain and stain matching across fiberglass components.
- Engineered for the extreme hot and cold temperatures of North America.



Doors are constructed using **rot resistant** composite top & bottom rails. (Kerf notched bottom rail shown)

**6/8 Low-E Glass** 

**RUSTIC CHERRY**



**TRADITIONAL CHERRY**



**MAHOGANY**



**OAK**



**KNOTTY ALDER**



**FIR**



**8/0 Low-E Glass** 

**RUSTIC CHERRY**



**KNOTTY ALDER**



**630**  
Premium Architectural Collection  
Shown in Traditional Cherry  
Teak Stain

\*Dentil Shelf Available  
All available only in 3/0 x 6/8 or 6/0 x 6/8 double doors.  
All grains are shown in a cherry stain.  
To see more grain and stain options, see page 4.

# ARCHITECTURAL COLLECTION

6/8



602SHD 607SHD 608SHD 609SHD 611SHD 613SHD 622SHD 625SHD 626SHD 643SHD 630SHD 644SHD



648SHD 658SHD 674SHD 675SHD 678SHD 680SHD 682SHD 684SHD 686SHD 688SHD 802SHD\* 803SHD\*



804SHD\* 806SHD\* SL422 SHD SL423 SHD SL424 SHD SL690 SHD SL691 SHD SL692 SHD

\*Dentil Shelf Available  
 All available only in 3/0 x 6/8 or 6/0 x 6/8 double doors.  
 All grains are shown in a cherry stain.  
 To see more grain and stain options, see page 4.

8/0



708SHD 718SHD 724SHD 759SHD 761SHD 774SHD



778SHD 786SHD 789SHD 796SHD 799SHD 906SHD



SL759 SHD SL760 SHD

\*Dentil Shelf Available  
 All available only in 3/0 x 6/8 or 6/0 x 6/8 double doors.  
 All grains are shown in a cherry stain.  
 To see more grain and stain options, see page 4.



**796SHD, SL760SHD**  
 Premium Architectural Collection  
 Shown in Rustic Cherry Grain  
 Cherry Stain

Pet Doors

Patio & Double Doors

Fire-Rated Doors

Severe Weather Fiberglass Doors

Architectural Collection

Simulated Divided Lites Collection

Spotlights™ Collection

# SIMULATED DIVIDED LITES COLLECTION

**IT LOOKS LIKE TRADITIONAL TRUE DIVIDED LITE DOORS - INSTEAD THEY ARE A MORE ENERGY EFFICIENT DOOR WITH A CLASSIC PROFILE ON THE FRAME.**

**PRACTICAL AND ELEGANT TAKE ON TRADITIONAL DIVIDED DOOR LITES.**

The look of a true divided lite, with the energy efficiency of a single lite. A mill finish between glass, and backing strips for a true wood muntin appearance.



The Traditional SDL bars are injection molded along with our Evolve® Frame to eliminate separate application of the SDL bars. This all-in-one design offers a better flush-to-glass fit.

## IN-STOCK GLASS



Clear Low-E 

Privacy Rating



**(2) 607SDL**  
Shown in Fiberglass Oak Grain  
Teak Stain

# SIMULATED DIVIDED LITES COLLECTION



**607SDL**  
Shown in Fiberglass Oak Grain Golden Oak Stain

## SPECIAL ORDER GLASS

**SPECIAL ORDER**  
Available in 3-8 Weeks



**Baroque\***

Privacy Rating



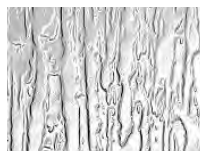
**Blanca\***

Privacy Rating



**Chinchilla\***

Privacy Rating



**Rain\***

Privacy Rating



\*Not available in Architectural Collection.

## 6/8 Low-E Glass

\*Dentil Shelf Available.



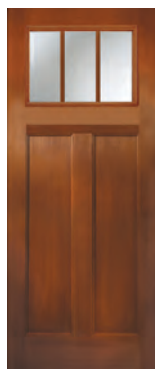
607SDL



608SDL



686SDL



867SDL\*



868SDL\*



SL422SDL



SL690SDL

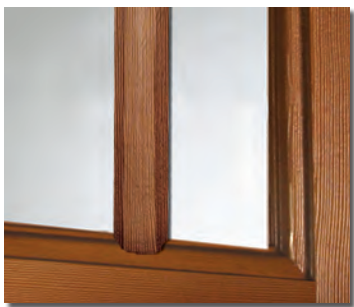
### Notes:

- Craftsman doors come with a flat Craftsman lite frame. Side lites come with standard Evolve lite frame
- Select skin configurations available for Fir, Mahogany, Oak, and Fiberglass Smooth

# CRAFTSMAN COLLECTION



**FF 806 Craftsman**  
Shown in Fiberglass Fir Grain  
Golden Oak Stain



Energy efficient SDL Bars (Simulated Divided Lites) add the rich three dimensional effect of traditional wood without the risk of warping, cracking or rotting.

## IN-STOCK GLASS



Clear glass  
Privacy Rating



Fir grain 4 block dentil shelf is lightweight and will not warp, crack or rot

**6/8**

**8/0**



FF 801\*



FF 803\*



FF 806\*



FF SL801



FF SL802



FF 801\*



FF 803\*



FF 806\*

\*Dentil Shelf Available.

Doors available in 3/0 x 6/8 or 8/0 only.

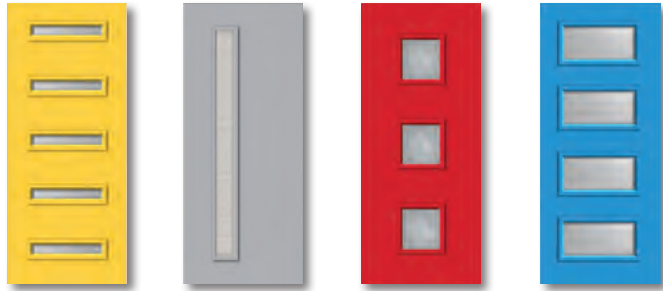
# SPOTLIGHTS™ COLLECTION



Spotlights™

**651H4 Clear LOW-E Glass**  
Shown in Fiberglass Smooth Bahama Blue Paint

## AUTHENTIC DESIGN FOR THE ARCHITECTURE ENTHUSIAST™



**842H5** (5) 22" X 3.5" Clear Low-E  
**694V** 7" X 64" Cubed  
**840Q3** (3) 12" X 12" Chinchilla  
**651H4** (4) 22" X 10" Frosted

### CLEAR LOW-E GLASS



### FROSTED GLASS



### IN-STOCK GLASS

**Clear Low-E**

Privacy Rating

1 10  
▲ Low High

**Frosted**

Privacy Rating

1 9 10  
Low High ▲

### SPECIAL ORDER GLASS

**SPECIAL ORDER**  
Available in 3-6 Weeks

**Cubed**

Privacy Rating

1 9 10  
Low High ▲

**Circuit**

Privacy Rating

1 5 10  
Low High ▲

**Chinchilla**

Privacy Rating

1 9 10  
Low High ▲

**Rain**

Privacy Rating

1 9 10  
Low High ▲

Pet Doors

Patio & Double Doors

Fire-Rated Doors

Severe Weather Fiberglass Doors

Architectural Collection

Simulated Divided Lites Collection

Spotlights™ Collection

# BEAUFORT COLLECTION

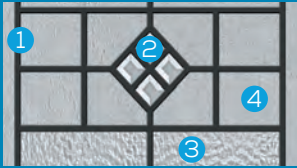
Available Caming: Patina  Severe Weather Doorglass Available

Privacy Rating



Beaufort door glass adds to your home a mix of beveled and hammered glass with a patina caming for the old world pattern in a traditional setting. Beaufort offers a medium level of privacy.

### Glass Details



- 1 - Patina
- 2 - Clear Bevel
- 3 - Hammered
- 4 - Seedy

### Available Caming



Patina



**607BFT**  
Shown in Fiberglass Oak Grain  
Walnut Stain

## STANDARD FIBERGLASS & STEEL DOORS

6/8



**422BFT** (2) 8"x48"  
**607BFT** 22"x48"  
**608BFT** 22"x48"  
**628BFT** 22"x36"  
**683BFT** 22"x36"  
**684BFT** 22"x36"  
**686BFT** 22"x64"  
**692BFT** (2) 8"x36"

8/0



**SL 422BFT** 8"x48"  
**SL 690BFT** 8"x64"  
**SL 692BFT** 8"x36"  
**SL 694BFT** 7"x64"  
**759BFT** 22"x64"  
**906BFT** 22"x48"  
**SL 759BFT** 7"x64"

## ARCHITECTURAL FIBERGLASS DOORS

6/8



**607BFT** 22"x48"  
**608BFT** 22"x48"  
**628BFT** 22"x48"  
**682BFT** 22"x36"  
**684BFT** 22"x36"  
**686BFT** 22"x64"  
**SL422BFT** 8"x48"  
**SL 690BFT** 8"x64"  
**SL 692BFT** 8"x36"

8/0



**779BFT** 22"x48"  
**789BFT** 22"x64"  
**799BFT** 22"x64"  
**SL 759BFT** 8"x64"

	PREMIUM ARCHITECTURAL™ FIBERGLASS DOORS															STANDARD FIBERGLASS DOORS									STEEL DOORS											
	Rustic Cherry			Traditional Cherry			Mahogany			Oak			Knotty Alder			Mahogany			Oak			Smooth			Majestic Steel			Replacement Steel								
DOOR WIDTHS	3/0	12"	14"	3/0	12"	14"	3/0	12"	14"	3/0	12"	14"	3/0	12"	14"	2/8	3/0	12"	14"	2/8	2/10	3/0	12"	14"	2/6	2/8	2/10	3/0	12"	14"	2/6	2/8	2/10	3/0		
<b>6/8 MODELS</b>																																				
422BFT																																				
607BFT																																				
608BFT																																				
628BFT																																				
682BFT																																				
683BFT																																				
684BFT																																				
686BFT																																				
692BFT																																				
SL422BFT																																				
SL690BFT																																				
SL692BFT																																				
SL694BFT																																				
<b>8/0 MODELS</b>																																				
759BFT																																				
779BFT																																				
789BFT																																				
799BFT																																				
906BFT																																				
SL759BFT																																				

6/8 & 8/0 Units Include: 4-9/16" Primed Frame • Primed Brickmold • Composite Adjustable Sill • 3 Satin Nickel Hinges for 6/8, 4 Satin Nickel Hinges for 8/0. Double door units available. Call for availability. Note: All Standard and Architectural Fiberglass doors can be prefinished in all Paint and Stain Colors. See page 3 and 4.



# Privacy Rating

1 9 10  
Low ▲ High

# ELEGANT STAR COLLECTION

Severe Weather Doorglass Available



Available Caming: Wrought Iron



**686TX**  
Premium Architectural Collection  
Shown in Traditional Cherry Grain  
Golden Oak Stain

Elegant Star with wrought iron and textured translucent glass is a rustic, South Western treatment. Providing you with a high level of privacy.

**Glass Details**

1 - Wrought Iron    2 - Micro Granite

**Available Caming**

Wrought Iron

## STANDARD FIBERGLASS & STEEL DOORS

**6/8**



**682TX**  
22"x36"



**683TX**  
22"x36"



**684TX**  
22"x36"



**686TX**  
22"x64"



**SL 692TX**  
8"x36"



**SL 690TX**  
8"x64"

**8/0**



**759TX**  
22"x64"



**SL 759TX**  
7"x64"

**Transom**



**506TX**  
62-7/8"x13-7/8"

## ARCHITECTURAL FIBERGLASS DOORS

**6/8**



**682TX**  
22"x36"



**684TX**  
22"x36"



**686TX**  
22"x64"



**SL 692TX**  
8"x36"



**SL 690TX**  
8"x64"

**8/0**



**789TX**  
22"x64"



**799TX**  
22"x64"



**SL 759TX**  
8"x64"

DOOR WIDTHS	PREMIUM ARCHITECTURAL™ FIBERGLASS DOORS															STANDARD FIBERGLASS DOORS									STEEL DOORS									
	Rustic Cherry			Traditional Cherry			Mahogany			Oak			Knotty Alder			Mahogany			Oak			Smooth			Majestic Steel				Replacement Steel					
<b>6/8 MODELS</b>	3/0	12"	14"	3/0	12"	14"	3/0	12"	14"	3/0	12"	14"	3/0	12"	14"	2/8	3/0	12"	14"	2/8	2/10	3/0	12"	14"	2/6	2/8	2/10	3/0	12"	14"	2/6	2/8	2/10	3/0
682TX																																		
683TX																																		
684TX																																		
686TX																																		
692TX																																		
SL692TX																																		
SL690TX																																		
<b>8/0 MODELS</b>																																		
759TX																																		
789TX																																		
799TX																																		
SL759TX																																		

6/8 & 8/0 Units Include: 4-9/16" Primed Frame • Primed Brickmold • Composite Adjustable Sill • 3 Satin Nickel Hinges for 6/8, 4 Satin Nickel Hinges for 8/0. Double door units available. Call for availability.  
Note: All Standard and Architectural Fiberglass doors can be prefinished in all Paint and Stain Colors. See page 3 and 4.

Decorative Glass Collection  
Textured Privacy Glass Collection  
Special Order  
Mini Blinds Collection  
Grilles Between Glass Collection  
Classic Collection  
Openings  
Warranties

# GRACE COLLECTION

Available Caming: Nickel or Patina

Severe Weather Doorglass Available

Privacy Rating

1 7 10  
Low ▲ High

Accent your front door with the graceful styling of a bevel cluster. The Cluster look of Grace includes a backdrop of glass textures and a nickel or patina finish. Offering your home with a high level of privacy.

### Glass Details



1 - Nickel or Patina    4 - Granite  
2 - Micro-cubed        5 - Micro-granite  
3 - Clear Bevel

### Available Caming



Nickel                  Patina



**607GRC, (2) SL422GRC**  
Shown in Fiberglass Smooth  
Shown in Wicker Paint

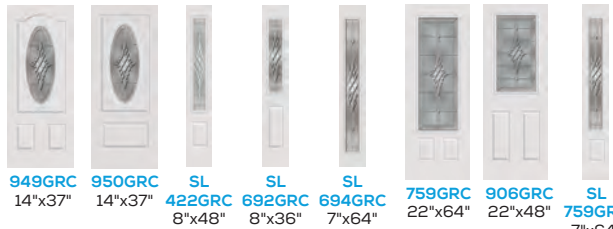
## STANDARD FIBERGLASS & STEEL DOORS

6/8



422GRC (2) 8"x48"    607GRC 22"x48"    608GRC 22"x48"    659GRC 21.8"x 9.81"    682GRC 22"x36"    683GRC 22"x36"    684GRC 22"x36"    686GRC 22"x64"    692GRC (2) 8"x36"    749GRC 14"x37"    949GRC 14"x37"    950GRC 14"x37"

8/0



SL 422GRC 8"x48"    SL 692GRC 8"x36"    SL 694GRC 7"x64"    759GRC 22"x64"    906GRC 22"x48"    SL 759GRC 7"x64"

## ARCHITECTURAL FIBERGLASS DOORS

6/8



607GRC 22"x48"    608GRC 22"x48"    628GRC 22"x48"    682GRC 22"x36"    684GRC 22"x36"    686GRC 22"x64"    SL 422GRC 8"x48"    SL 692GRC 8"x36"    779GRC 22"x48"    789GRC 22"x64"    799GRC 22"x64"

8/0



779GRC 22"x48"    789GRC 22"x64"    799GRC 22"x64"

	PREMIUM ARCHITECTURAL™ FIBERGLASS DOORS										STANDARD FIBERGLASS DOORS												STEEL DOORS																			
	Rustic Cherry			Traditional Cherry			Mahogany			Oak			Knotty Alder	Mahogany				Oak				Smooth				Majestic Steel			Replacement Steel													
DOOR WIDTHS	3/0	12"	14"	3/0	12"	14"	3/0	12"	14"	3/0	12"	14"	3/0	2/8	3/0	12"	14"	2/8	2/10	3/0	12"	14"	2/6	2/8	2/10	3/0	12"	14"	2/6	2/8	2/10	3/0										
<b>6/8 MODELS</b>																																										
422GRC																																										
607GRC																																										
608GRC																																										
628GRC																																										
659GRC																																										
682GRC																																										
683GRC																																										
684GRC																																										
686GRC																																										
692GRC																																										
749GRC																																										
949GRC																																										
950GRC																																										
SL422GRC																																										
SL692GRC																																										
SL694GRC																																										
<b>8/0 MODELS</b>																																										
759GRC																																										
779GRC																																										
789GRC																																										
799GRC																																										
906GRC																																										
SL759GRC																																										

6/8 & 8/0 Units Include: 4-9/16" Primed Frame • Primed Brickmold • Composite Adjustable Sill • 3 Satin Nickel Hinges for 6/8, 4 Satin Nickel Hinges for 8/0. Double door units available. Call for availability.  
Note: All Standard and Architectural Fiberglass doors can be prefinished in all Paint and Stain Colors. See page 3 and 4.



# HEIRLOOMS COLLECTION

Privacy Rating



Available Caming: Brass or Nickel

Severe Weather Doorglass Available

The value you place on history makes Heirlooms your perfect choice. Its deeply cut bevels and satin nickel or brass finish create a Classic design that endures, just like family features that lie within your home. Heirlooms offers a medium level of privacy.

### Glass Details



- 1 - Brass or Nickel
- 2 - Glue Chip
- 3 - Clear Bevel
- 4 - Granite

### Available Caming



Brass Nickel



**607HM, (2) SL422HM**  
Premium Architectural Collection  
Shown in Mahogany Grain  
Espresso Stain

## STANDARD FIBERGLASS & STEEL DOORS

6/8



422HM (2) 8"x48" 607HM 22"x48" 608HM 22"x48" 659HM 21.8"x 9.81" 682HM 22"x36" 683HM 22"x36" 684HM 22"x36" 686HM 22"x64" 692HM (2) 8"x36" 749HM 14"x37" 919HM 20.5"x 56.35" 949HM 14"x37" 950HM 14"x37" SL 422HM 8"x48" SL 690HM 8"x64" SL 692HM 8"x36" SL 694HM 7"x64" 759HM 22"x64" 906HM 22"x48" SL 759HM 7"x64"

8/0



## ARCHITECTURAL FIBERGLASS DOORS

6/8



607HM 22"x48" 608HM 22"x48" 628HM 22"x48" 682HM 22"x36" 684HM 22"x36" 686HM 22"x64" 692HM (2) 8"x36" SL 422HM 8"x48" SL 690HM 8"x64" SL 692HM 8"x36"

8/0



779HM 22"x48" 789HM 22"x64" 799HM 22"x64" SL759HM 8"x64"

Transom



521HM  
62-7/8"x11-7/8"

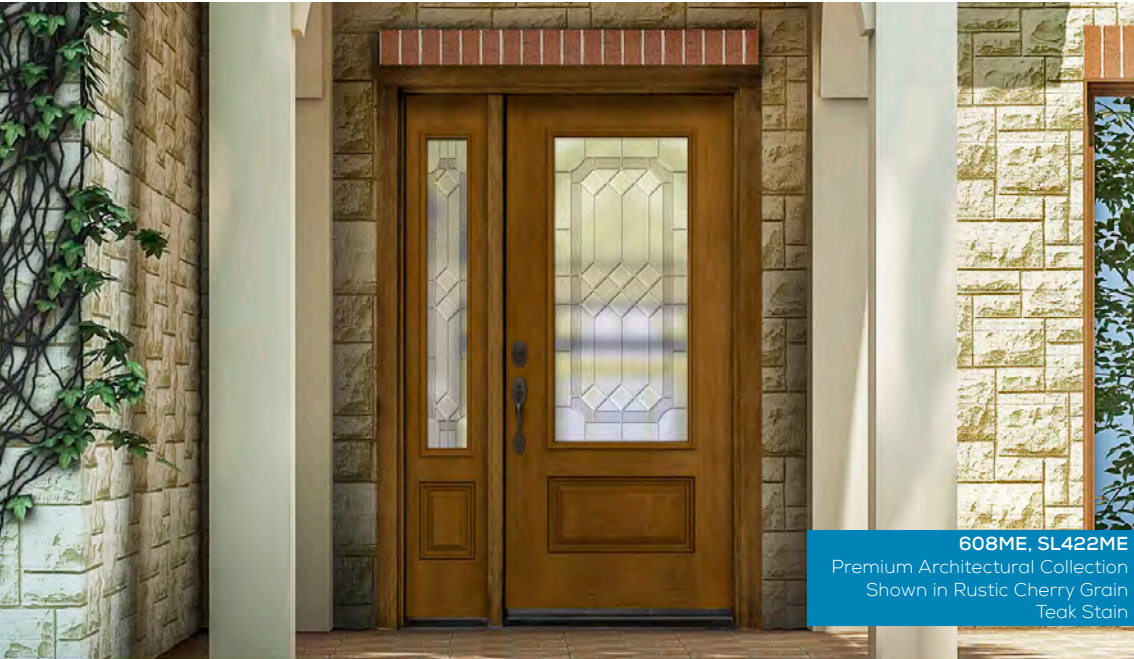
DOOR WIDTHS	PREMIUM ARCHITECTURAL™ FIBERGLASS DOORS					STANDARD FIBERGLASS DOORS						STEEL DOORS														
	Rustic Cherry		Traditional Cherry		Mahogany	Oak		Knotty Alder		Mahogany		Oak		Smooth		Majestic Steel		Replacement Steel								
	3/0	12"	14"	3/0	12"	14"	3/0	12"	14"	3/0	12"	14"	3/0	12"	14"	2/6	2/8	2/10	3/0	12"	14"	2/6	2/8	2/10	3/0	
<b>6/8 MODELS</b>																										
422HM																										
607HM																										
608HM																										
628HM																										
659HM																										
682HM																										
683HM																										
684HM																										
686HM																										
692HM																										
749HM																										
919HM																										
949HM																										
950HM																										
SL422HM																										
SL690HM																										
SL692HM																										
SL694HM																										
<b>8/0 MODELS</b>																										
759HM																										
779HM																										
789HM																										
799HM																										
906HM																										
SL759HM																										

Privacy Rating



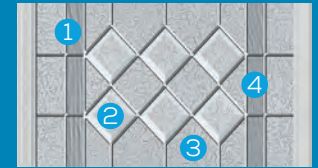
# MAJESTIC COLLECTION

Severe Weather Doorglass Available Available Caming: Nickel; Special Order Caming: Brass or Patina



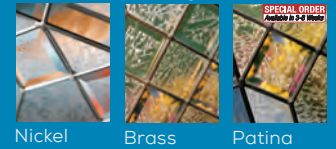
Majestic's formal pattern of bevels and glass, accented with gray shades, is the epitome of Classic design. Providing you with a medium level of privacy to your home.

**Glass Details**



- 1 - Nickel Caming      3 - Glue Chip
- 2 - Glue Chip Bevels    4 - Gray Soft Wave

**Available Caming**



Nickel      Brass      Patina

## STANDARD FIBERGLASS & STEEL DOORS

6/8



422ME (2) 8"x48"    607ME 22"x48"    608ME 22"x48"    682ME 22"x36"    683ME 22"x36"    684ME 22"x36"    686ME 22"x64"    692ME (2) 8"x36"    SL 422ME 8"x48"    SL 690ME 8"x64"    SL 692ME 8"x36"    SL 694ME 7"x64"    759ME 22"x64"    906ME 22"x48"    SL 759ME 7"x64"

8/0



759ME 22"x64"

Transom



521ME 62-7/8"x11-7/8"

## ARCHITECTURAL FIBERGLASS DOORS

6/8



607ME 22"x48"    608ME 22"x48"    628ME 22"x48"    682ME 22"x36"    684ME 22"x36"    686ME 22"x64"    SL 422ME 8"x48"    SL 690ME 8"x64"    SL 692ME 8"x36"    779ME 22"x48"    789ME 22"x64"    799ME 22"x64"    SL759ME 8"x64"

8/0



779ME 22"x48"    789ME 22"x64"    799ME 22"x64"    SL759ME 8"x64"

DOOR WIDTHS	PREMIUM ARCHITECTURAL™ FIBERGLASS DOORS															STANDARD FIBERGLASS DOORS										STEEL DOORS																
	Rustic Cherry			Traditional Cherry			Mahogany			Oak			Knotty Alder			Mahogany			Oak				Smooth			Majestic Steel			Replacement Steel													
6/8 MODELS	3/0	12"	14"	3/0	12"	14"	3/0	12"	14"	3/0	12"	14"	3/0	12"	14"	2/8	3/0	12"	14"	2/8	2/10	3/0	12"	14"	2/6	2/8	2/10	3/0	12"	14"	2/6	2/8	2/10	3/0	12"	14"	2/6	2/8	2/10	3/0		
422ME																																										
607ME																																										
608ME																																										
628ME																																										
682ME																																										
683ME																																										
684ME																																										
686ME																																										
692ME																																										
SL422ME																																										
SL690ME																																										
SL692ME																																										
SL694ME																																										
8/0 MODELS																																										
759ME																																										
779ME																																										
789ME																																										
799ME																																										
906ME																																										
SL759ME																																										

6/8 & 8/0 Units Include: 4-9/16" Primed Frame • Primed Brickmold • Composite Adjustable Sill • 3 Satin Nickel Hinges for 6/8, 4 Satin Nickel Hinges for 8/0. Double door units available. Call for availability. Note: All Standard and Architectural Fiberglass doors can be prefinished in all Paint and Stain Colors. See page 3 and 4.

Decorative Glass Collection  
Textured Privacy Glass Collection  
Special Order  
Mini Blinds Collection  
Grilles Between Glass Collection  
Classic Collection  
Openings  
Warranties

# MONTCLAIRE COLLECTION

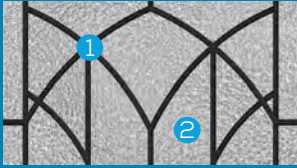
Privacy Rating



Available Caming: Nickel Vein Wrought Iron Severe Weather Doorglass Available

MontClaire pays homage to Tuscan architecture with overtures of cathedral arches as seen in doors, cabinetry, railings and archways. This old world design combines warmth through simple wrought iron craftsmanship integrated with granite textured glass. MontClaire offers a medium privacy level.

### Glass Details



1 - Nickel Vein Wrought Iron 2 - Granite

### Available Caming



Nickel Vein Wrought Iron



**686MTC**  
Shown in Fiberglass Smooth Wicker Paint

## STANDARD FIBERGLASS & STEEL DOORS

6/8



**422MTC**  
(2)8"x48"



**607MTC**  
22"x48"



**608MTC**  
22"x48"



**686MTC**  
22"x64"



**866MTC\***  
22"x15.25"



**SL 422MTC**  
8"x48"



**SL 694MTC**  
7"x64"

8/0



**759MTC**  
22"x64"



**906MTC**  
22"x48"



**SL 759MTC**  
7"x64"

\* Dentil Shelf Available

## ARCHITECTURAL FIBERGLASS DOORS

6/8



**607MTC**  
22"x48"



**608MTC**  
22"x48"



**628MTC**  
22"x48"



**686MTC**  
22"x64"



**SL 422MTC**  
8"x48"

8/0



**779MTC**  
22"x48"



**789MTC**  
22"x64"



**799MTC**  
22"x64"

DOOR WIDTHS	PREMIUM ARCHITECTURAL™ FIBERGLASS DOORS							STANDARD FIBERGLASS DOORS								Majestic Steel		Replacement Steel							
	Rustic Cherry		Traditional Cherry		Mahogany		Oak	Knotty Alder	Fir	Mahogany		Oak		Smooth		Majestic Steel		Replacement Steel							
	3/0	12"	14"	3/0	12"	14"	3/0	12"	14"	3/0	2/8	3/0	2/8	3/0	12"	14"	2/8	2/10	3/0	12"	14"	2/8	2/10	3/0	
<b>6/8 MODELS</b>																									
422MTC																									
607MTC																									
608MTC																									
628MTC																									
686MTC																									
866MTC																									
SL422MTC																									
SL694MTC																									
<b>8/0 MODELS</b>																									
759MTC																									
779MTC																									
789MTC																									
799MTC																									
906MTC																									
SL759MTC																									

6/8 & 8/0 Units Include: 4-9/16" Primed Frame • Primed Brickmold • Composite Adjustable Sill • 3 Satin Nickel Hinges for 6/8, 4 Satin Nickel Hinges for 8/0. Double door units available. Call for availability. Note: All Standard and Architectural Fiberglass doors can be prefinished in all Paint and Stain Colors. See page 3 and 4.

Privacy Rating



# NOUVEAU COLLECTION

Severe Weather Doorglass Available

Available Caming: Brass, Nickel, or Patina

Decorative Glass Collection

Textured Privacy Glass Collection

Special Order

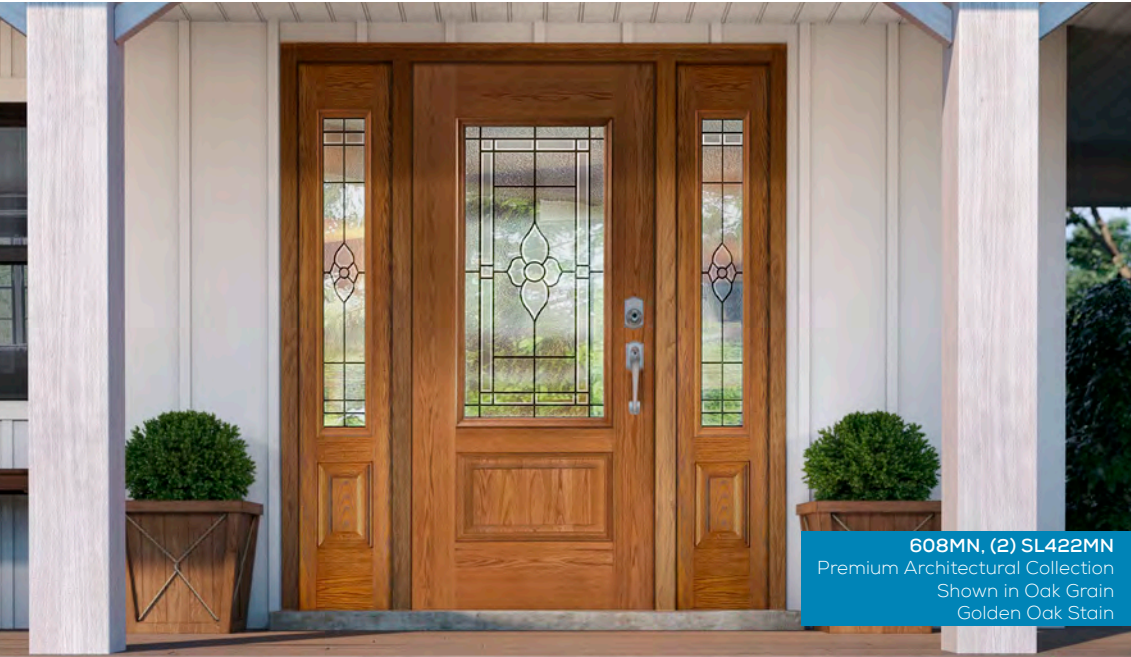
Mini Blinds Collection

Grilles Between Glass Collection

Classic Collection

Openings

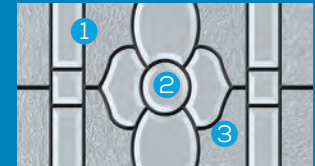
Warranties



**608MN, (2) SL422MN**  
Premium Architectural Collection  
Shown in Oak Grain Golden Oak Stain

Nouveau places a brilliant bevel cluster at its center and frames it with a Classic bevel and translucent glass design. Nouveau doorglass provides your home a medium level of privacy.

**Glass Details**



1 - Patina Caming    3 - Glue Chip  
2 - Clear Bevel

**Available Caming**



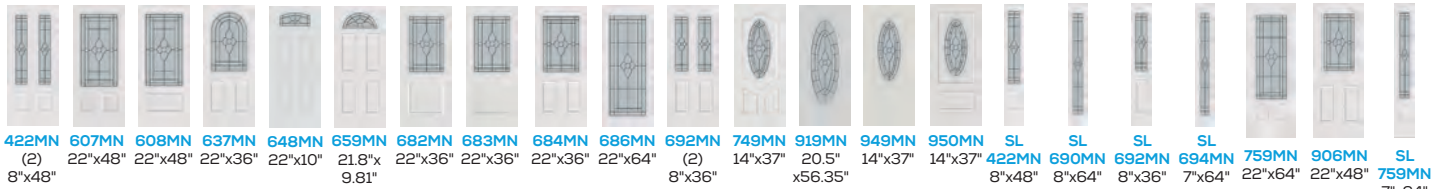
Brass    Nickel    Patina

## STANDARD FIBERGLASS & STEEL DOORS

6/8

\* Dentil Shelf Available

8/0



422MN (2) 22"x48" 8"x48"    607MN 22"x48"    608MN 22"x48"    637MN 22"x36"    648MN 22"x10"    659MN 21.8"x9.81"    682MN 22"x36"    683MN 22"x36"    684MN 22"x36"    686MN 22"x64"    692MN (2) 8"x36"    749MN 14"x37"    919MN 20.5"x56.35"    949MN 14"x37"    950MN 14"x37"    SL 422MN 8"x48"    SL 690MN 8"x64"    SL 692MN 8"x36"    SL 694MN 7"x64"    759MN 22"x64"    906MN 22"x48"    SL 759MN 7"x64"

## ARCHITECTURAL FIBERGLASS DOORS

6/8

8/0



607MN 22"x48"    608MN 22"x48"    628MN 22"x48"    682MN 22"x36"    684MN 22"x36"    686MN 22"x64"    SL 422MN 8"x48"    SL 690MN 8"x64"    SL 692MN 8"x36"    779MN 22"x48"    789MN 22"x64"    799MN 22"x64"    SL 759MN 8"x64"

**Transom**



521MN  
62-7/8" x 11-7/8"

	PREMIUM ARCHITECTURAL™ FIBERGLASS DOORS															STANDARD FIBERGLASS DOORS									STEEL DOORS											
	Rustic Cherry			Traditional Cherry			Mahogany			Oak			Knotty Alder			Mahogany			Oak			Smooth			Majestic Steel			Replacement Steel								
DOOR WIDTHS	3/0	12"	14"	3/0	12"	14"	3/0	12"	14"	3/0	12"	14"	3/0	12"	14"	2/8	3/0	12"	14"	2/8	2/10	3/0	12"	14"	2/6	2/8	2/10	3/0	12"	14"	2/6	2/8	2/10	3/0		
<b>6/8 MODELS</b>																																				
422MN																																				
607MN																																				
608MN																																				
628MN																																				
637MN																																				
648MN																																				
659MN																																				
682MN																																				
683MN																																				
684MN																																				
686MN																																				
692MN																																				
749MN																																				
919MN																																				
949MN																																				
950MN																																				
SL422MN																																				
SL690MN																																				
SL692MN																																				
SL694MN																																				
<b>8/0 MODELS</b>																																				
759MN																																				
779MN																																				
789MN																																				
799MN																																				
906MN																																				
SL759MN																																				

6/8 & 8/0 Units Include: 4-9/16" Primed Frame • Primed Brickmold • Composite Adjustable Sill • 3 Satin Nickel Hinges for 6/8, 4 Satin Nickel Hinges for 8/0. Double door units available. Call for availability. Note: All Standard and Architectural Fiberglass doors can be prefinished in all Paint and Stain Colors. See page 3 and 4.

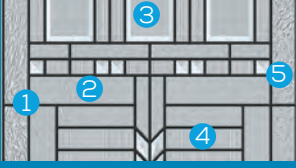
# OAK PARK COLLECTION

Available Caming: Patina Severe Weather Doorglass Available

Privacy Rating  
 1 Low 5 High 10 High  
 ▲

A patina finish and handcrafted textured glass creates a striking geometric pattern. Oak Park provides a medium level of privacy.

## Glass Details



- 1 - Patina Caming
- 2 - Seedy
- 3 - Clear Bevel
- 4 - Thin Reed
- 5 - Crinkle

## Available Caming



Patina



607KP, SL422KP  
 Shown in Fiberglass Smooth Graystone White Paint

## STANDARD FIBERGLASS & STEEL DOORS

### 6/8

- 422KP  
(2) 8"x48"
- 607KP  
22"x48"
- 608KP  
22"x48"
- 682KP  
22"x36"
- 683KP  
22"x36"
- 684KP  
22"x36"
- 686KP  
22"x64"
- 692KP  
(2)  
8"x36"
- 814KP\*  
25"x  
15.25"
- 866KP\*  
22"x  
15.25"
- SL  
422KP  
8"x48"
- SL  
690KP  
8"x64"
- SL  
692KP  
8"x36"
- SL  
694KP  
7"x64"
- SL  
819KP  
8"x64"

### 8/0

- 759KP  
22"x64"
- 906KP  
22"x48"
- SL  
759KP  
7"x64"

\* Dentil Shelf Available

## ARCHITECTURAL FIBERGLASS DOORS

### 6/8

- 607KP  
22"x48"
- 608KP  
22"x48"
- 628KP  
22"x48"
- 682KP  
22"x36"
- 684KP  
22"x36"
- 686KP  
22"x64"
- SL  
422KP  
8"x48"
- SL  
690KP  
8"x48"
- SL  
692KP  
8"x36"

### 8/0

- 779KP  
22"x48"
- 789KP  
22"x64"
- 799KP  
22"x64"
- SL759KP  
8"x64"

### Transom

521KP  
62-7/8" x 11-7/8"

DOOR WIDTHS	PREMIUM ARCHITECTURAL™ FIBERGLASS DOORS															STANDARD FIBERGLASS DOORS												STEEL DOORS									
	Rustic Cherry			Traditional Cherry			Mahogany			Oak			Knotty Alder			Fir		Mahogany				Oak						Smooth		Majestic Steel				Replacement Steel			
	3/0	12"	14"	3/0	12"	14"	3/0	12"	14"	3/0	12"	14"	3/0	12"	14"	2/8	3/0	2/8	3/0	12"	14"	2/8	2/10	3/0	12"	14"	2/6	2/8	2/10	3/0	12"	14"	2/6	2/8	2/10	3/0	
6/8 MODELS																																					
422KP																																					
607KP																																					
608KP																																					
628KP																																					
682KP																																					
683KP																																					
684KP																																					
686KP																																					
692KP																																					
814KP																																					
866KP																																					
SL422KP																																					
SL690KP																																					
SL692KP																																					
SL694KP																																					
SL819KP																																					
8/0 MODELS																																					
759KP																																					
779KP																																					
789KP																																					
799KP																																					
906KP																																					
SL759KP																																					

6/8 & 8/0 Units Include: 4-9/16" Primed Frame • Primed Brickmold • Composite Adjustable Sill • 3 Satin Nickel Hinges for 6/8, 4 Satin Nickel Hinges for 8/0. Double door units available. Call for availability.  
 Note: All Standard and Architectural Fiberglass doors can be prefinished in all Paint and Stain Colors. See page 3 and 4.



Privacy Rating

1 8 10  
 Low ▲ High

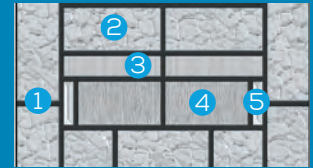
# PEMBROOK COLLECTION

Severe Weather Doorglass Available Available Caming: Patina



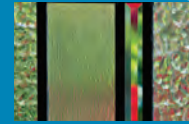
Pembrook's modern geometric design with sharp lines and a beautiful arrangement of clear bevels, streamed, arctic, and micro cubed glass textures elicits a sense of style to the entry of your home. Pembrook offers a high privacy level.

**Glass Details**



- 1 - Patina Caming      4 - Streamed
- 2 - Arctic             5 - Clear Bevel
- 3 - Micro-cubed

**Available Caming**



Patina

Decorative Glass Collection  
 Textured Privacy Glass Collection  
 Special Order  
 Mini Blinds Collection  
 Grilles Between Glass Collection  
 Classic Collection  
 Openings  
 Warranties

## STANDARD FIBERGLASS & STEEL DOORS

\* Dentil Shelf Available

6/8

8/0



## ARCHITECTURAL FIBERGLASS DOORS

**Transom**



6/8


8/0



DOOR WIDTHS	PREMIUM ARCHITECTURAL™ FIBERGLASS DOORS															STANDARD FIBERGLASS DOORS										STEEL DOORS							
	Rustic Cherry			Traditional Cherry			Mahogany			Oak			Knotty Alder			Fir		Mahogany		Oak				Smooth		Majestic Steel		Replacement Steel					
	3/0	12"	14"	3/0	12"	14"	3/0	12"	14"	3/0	12"	14"	3/0	12"	14"	2/8	3/0	2/8	3/0	2/8	12"	14"	2/8	2/10	3/0	12"	14"	2/6	2/8	2/10	3/0		
<b>6/8 MODELS</b>																																	
422PEM																																	
607PEM																																	
608PEM																																	
628PEM																																	
682PEM																																	
683PEM																																	
684PEM																																	
686PEM																																	
692PEM																																	
866PEM																																	
SL422PEM																																	
SL690PEM																																	
SL692PEM																																	
SL694PEM																																	
<b>8/0 MODELS</b>																																	
759PEM																																	
779PEM																																	
789PEM																																	
799PEM																																	
906PEM																																	
SL759PEM																																	

6/8 & 8/0 Units Include: 4-9/16" Primed Frame • Primed Brickmold • Composite Adjustable Sill • 3 Satin Nickel Hinges for 6/8, 4 Satin Nickel Hinges for 8/0. Double door units available. Call for availability.  
 Note: All Standard and Architectural Fiberglass doors can be prefinished in all Paint and Stain Colors. See page 3 and 4.

# SELWYN COLLECTION

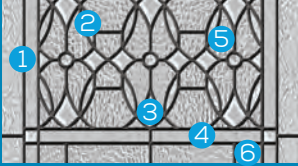
Available Caming: Patina  Severe Weather Doorglass Available

Privacy Rating



Your design sophistication and love of all things elegant make Selwyn the choice for your home. A sophisticated and graceful mix of bevels, glass textures, and a patina finish add immediate impact to your home. Proving you a high privacy level.

### Glass Details



- 1 - Patina Caming
- 2 - Seedy
- 3 - Clear Bevel
- 4 - Thin Reed
- 5 - Crinkle
- 6 - (unlabeled detail)

### Available Caming



Patina



684SWY, (2) SL692SWY  
Shown in Fiberglass Smooth  
Naval Paint

## STANDARD FIBERGLASS & STEEL DOORS

6/8

\* Dentil Shelf Available



8/0

## ARCHITECTURAL FIBERGLASS DOORS

6/8

8/0



DOOR WIDTHS	PREMIUM ARCHITECTURAL™ FIBERGLASS DOORS										STANDARD FIBERGLASS DOORS										STEEL DOORS													
	Rustic Cherry			Traditional Cherry			Mahogany			Oak			Knotty Alder	Fir	Mahogany			Oak				Smooth				Majestic Steel			Replacement Steel					
6/8 MODELS	3/0	12"	14"	3/0	12"	14"	3/0	12"	14"	3/0	12"	14"	3/0	2/8	3/0	2/8	3/0	12"	14"	2/8	2/10	3/0	12"	14"	2/6	2/8	2/10	3/0	12"	14"	2/6	2/8	2/10	3/0
422SWY																																		
607SWY																																		
608SWY																																		
628SWY																																		
648SWY																																		
682SWY																																		
683SWY																																		
684SWY																																		
686SWY																																		
692SWY																																		
866SWY																																		
SL422SWY																																		
SL692SWY																																		
SL694SWY																																		
8/0 MODELS																																		
759SWY																																		
779SWY																																		
789SWY																																		
799SWY																																		
906SWY																																		
SL759SWY																																		

6/8 & 8/0 Units Include: 4-9/16" Primed Frame • Primed Brickmold • Composite Adjustable Sill • 3 Satin Nickel Hinges for 6/8, 4 Satin Nickel Hinges for 8/0. Double door units available. Call for availability. Note: All Standard and Architectural Fiberglass doors can be prefinished in all Paint and Stain Colors. See page 3 and 4.

Privacy Rating



# BLANCA COLLECTION

Severe Weather Doorglass Available



**607BLC**  
Premium Architectural Collection  
Shown in Traditional Cherry Grain  
Golden Oak Stain

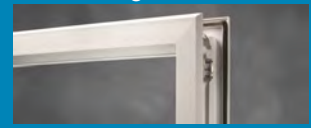
Offering a high level of privacy and an understated backdrop, Blanca has a frosted, slightly stippled surface. Textured surface enclosed in glass.

**Glass Details**



Blanca Silk Screened Glass

**Zeel™ Doorglass Frame**



Available in white

- \* Evolve® frame available as special order only
- \*\* Premium Architectural doors use their own proprietary matching lite frame

## STANDARD FIBERGLASS & STEEL DOORS

~ Comes with standard craftsman liteframe \* Dentil Shelf Available

6/8



8/0



## ARCHITECTURAL FIBERGLASS DOORS

\*\* Premium Architectural doors use their own proprietary matching lite frame

6/8



8/0



DOOR WIDTHS	PREMIUM ARCHITECTURAL™ FIBERGLASS DOORS					STANDARD FIBERGLASS DOORS						STEEL DOORS																									
	Rustic Cherry	Traditional Cherry		Mahogany	Oak	Knotty Alder	Fir	Mahogany	Oak		Smooth		Majestic Steel		Replacement Steel																						
3/0		3/0	12"	14"	3/0	12"	14"	3/0	14"	2/8	3/0	2/8	3/0	12"	14"	2/8	2/10	3/0	12"	14"	2/6	2/8	2/10	3/0	12"	14"	2/6	2/8	2/10	3/0							
<b>6/8 MODELS</b>																																					
607BLC																																					
608BLC																																					
628BLC																																					
682BLC																																					
683BLC																																					
684BLC																																					
686BLC																																					
692BLC																																					
866BLC																																					
SL692BLC																																					
SL694BLC																																					
<b>8/0 MODELS</b>																																					
759BLC																																					
779BLC																																					
789BLC																																					
799BLC																																					
906BLC																																					
SL759BLC																																					

6/8 & 8/0 Units Include: 4-9/16" Primed Frame • Primed Brickmold • Composite Adjustable Sill • 3 Satin Nickel Hinges for 6/8, 4 Satin Nickel Hinges for 8/0. Double door units available. Call for availability. Note: All Standard and Architectural Fiberglass doors can be refinished in all Paint and Stain Colors. See page 3 and 4.

Decorative Glass Collection  
Textured Privacy Glass Collection  
Special Order  
Mini Blinds Collection  
Grilles Between Glass Collection  
Classic Collection  
Openings  
Warranties

# CHINCHILLA COLLECTION

Privacy Rating



Severe Weather Doorglass Available

As touchable as its namesake, Chinchilla's fine lines and organic, fur-like texture create a striking wave pattern when seen from afar. It offers a high level of privacy to your home.

### Glass Details



Chinchilla Glass

### Zeel™ Doorglass Frame



Available in white

- \* Evolve® frame available as special order only
- \*\* Premium Architectural doors use their own proprietary matching lite frame



**686CHI**  
Premium Architectural Collection  
Shown in Knotty Alder Grain  
Dark Oak Stain

## STANDARD FIBERGLASS & STEEL DOORS

~ Comes with standard craftsman liteframe \* Dentil Shelf Available

6/8



8/0



## ARCHITECTURAL FIBERGLASS DOORS

\*\* Premium Architectural doors use their own proprietary matching lite frame

6/8



8/0



DOOR WIDTHS	PREMIUM ARCHITECTURAL™ FIBERGLASS DOORS					STANDARD FIBERGLASS DOORS										STEEL DOORS			
	Rustic Cherry	Traditional Cherry	Mahogany	Oak	Knotty Alder	Fir	Mahogany	Oak	Smooth	Majestic Steel	Replacement Steel								
	3/0	3/0 12"	14"	3/0 12"	14"	3/0 14"	2/8 3/0	2/8 3/0 12"	14"	2/8 2/10 3/0 12"	14"	2/6 2/8 2/10 3/0 12"	14"	2/6 2/8 2/10 3/0 12"	14"	2/6 2/8 2/10 3/0			
<b>6/8 MODELS</b>																			
607CHI																			
608CHI																			
628CHI																			
682CHI																			
683CHI																			
684CHI																			
686CHI																			
692CHI																			
866CHI																			
SL692CHI																			
SL694CHI																			
<b>8/0 MODELS</b>																			
759CHI																			
779CHI																			
789CHI																			
799CHI																			
906CHI																			
SL759CHI																			

6/8 & 8/0 Units Include: 4-9/16" Primed Frame • Primed Brickmold • Composite Adjustable Sill • 3 Satin Nickel Hinges for 6/8, 4 Satin Nickel Hinges for 8/0. Double door units available. Call for availability. Note: All Standard and Architectural Fiberglass doors can be prefinished in all Paint and Stain Colors. See page 3 and 4.



**608RN**  
 Shown in Fiberglass Smooth Bahama Blue Paint

All that's missing is the patter of raindrops. Rain features a vertical pattern and textured surface that creates the illusion of rain trickling down a window. It offers a high level of privacy.

**Glass Details**



Clear Bevels

**Zeel™ Doorglass Frame**



Available in white

\* Evolve® frame available as special order only

\*\* Premium Architectural doors use their own proprietary matching lite frame

## STANDARD FIBERGLASS & STEEL DOORS

^ Comes with standard EVOLVE lite frame ~ Comes with standard craftsman liteframe \* Dentil Shelf Available

6/8



8/0



## ARCHITECTURAL FIBERGLASS DOORS

\*\* Premium Architectural doors use their own proprietary matching lite frame

6/8



8/0



DOOR WIDTHS	PREMIUM ARCHITECTURAL™ FIBERGLASS DOORS												STANDARD FIBERGLASS DOORS								STEEL DOORS												
	Rustic Cherry		Traditional Cherry		Mahogany		Oak		Knotty Alder		Fir	Mahogany		Oak		Smooth				Majestic Steel			Replacement Steel										
6/8 MODELS	3/0	12"	14"	3/0	12"	14"	3/0	12"	14"	3/0	12"	14"	2/8	3/0	2/8	3/0	12"	14"	2/8	2/10	3/0	12"	14"	2/6	2/8	2/10	3/0	12"	14"	2/6	2/8	2/10	3/0
23RN																																	
607RN																																	
608RN																																	
628RN																																	
682RN																																	
683RN																																	
684RN																																	
686RN																																	
692RN																																	
749RN																																	
866RN																																	
949RN*																																	
950RN*																																	
SL422RN																																	
SL692RN																																	
SL694RN																																	
8/0 MODELS																																	
759RN*																																	
779RN																																	
789RN																																	
799RN																																	
906RN																																	
SL759RN																																	

6/8 & 8/0 Units Include: 4-9/16" Primed Frame • Primed Brickmold • Composite Adjustable Sill • 3 Satin Nickel Hinges for 6/8, 4 Satin Nickel Hinges for 8/0. Double door units available.  
 \*950RN and 759RN architectural door models are only available in 6/0. Call for details. Note: All Standard and Architectural Fiberglass doors can be prefinished in All Paint and Stain Colors. See page 3 and 4.

# VAPOR COLLECTION

Privacy Rating



Severe Weather Doorglass Available

Reminiscent of Northern Lights, Vapor creates an ethereal play of light and shadow, and a medium level of privacy to your entryway.

### Glass Details



Vapor Glass

### Zeel™ Doorglass Frame



Available in white

- \* Evolve® frame available as special order only
- \*\* Premium Architectural doors use their own proprietary matching lite frame



**608VPR, SL422VPR**  
Premium Architectural Collection  
Shown in Oak Grain  
Golden Stain

## STANDARD FIBERGLASS & STEEL DOORS

~ Comes with standard craftsman liteframe \* Dentil Shelf Available

6/8



8/0



## ARCHITECTURAL FIBERGLASS DOORS

\*\* Premium Architectural doors use their own proprietary matching lite frame \* Dentil Shelf Available

6/8



8/0



DOOR WIDTHS	PREMIUM ARCHITECTURAL™ FIBERGLASS DOORS							STANDARD FIBERGLASS DOORS							STEEL DOORS																						
	Fir		Rustic Cherry		Traditional Cherry		Mahogany		Oak		Knotty Alder		Fir		Mahogany		Oak		Smooth		Majestic Steel		Replacement Steel														
<b>6/8 MODELS</b>	3/0	12"	14"	3/0	12"	14"	3/0	12"	14"	3/0	12"	14"	3/0	14"	2/8	3/0	2/8	3/0	12"	14"	2/8	2/10	3/0	12"	14"	2/6	2/8	2/10	3/0	12"	14"	2/6	2/8	2/10	3/0		
607VPR																																					
608VPR																																					
628VPR																																					
682VPR																																					
683VPR																																					
684VPR																																					
686VPR																																					
692VPR																																					
866VPR																																					
SL422VPR																																					
SL692VPR																																					
SL694VPR																																					
SL820VPR																																					
<b>8/0 MODELS</b>																																					
759VPR																																					
779VPR																																					
789VPR																																					
799VPR																																					
906VPR																																					
SL759VPR																																					

**SPECIAL ORDER**  
Available in 3-6 Weeks

# SPECIAL ORDER GLASS

Decorative Glass  
Collection

Textured Privacy  
Glass Collection

Special Order

Mini Blinds  
Collection

Grilles Between  
Glass Collection

Classic  
Collection

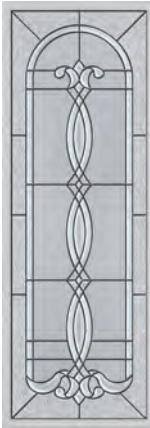
Openings

Warranties

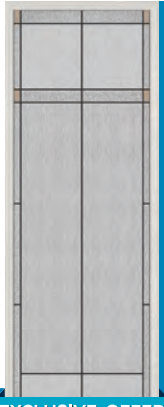


ATHERTON

EXCLUSIVE OFFER



AVANT



BALLANTYNE

EXCLUSIVE OFFER



BANTER



BRAINSTORM

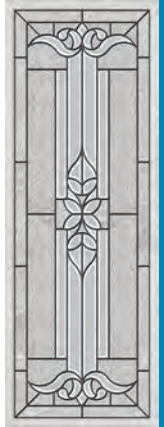


BREVARD

EXCLUSIVE OFFER



BRISTOL



CADENCE

EXCLUSIVE OFFER



CALDWELL



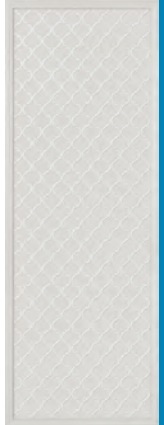
CARROLLTON



CATALINA



CHATTER



CONVERSE



COURTYARD



CROSSWALK



DILWORTH

EXCLUSIVE OFFER



EASTFIELD

EXCLUSIVE OFFER



ELIZABETH

EXCLUSIVE OFFER



ENTROPY



EXPRESSIONS

# SPECIAL ORDER GLASS

**SPECIAL ORDER**  
Available in 3-6 Weeks



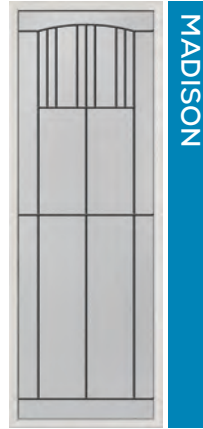
GREENFIELD



JACINTO



LINEN



MADISON



McALPINE

EXCLUSIVE OFFER



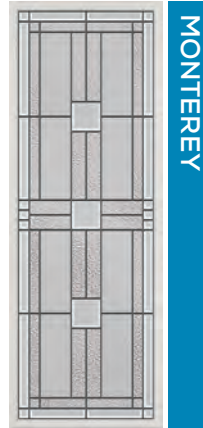
MEDITERRANEAN



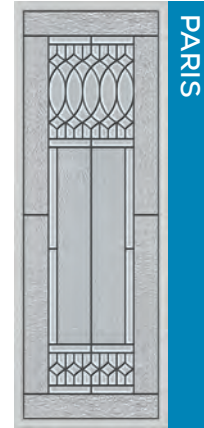
MICRO-GRANITE



MOHAVE



MONTEREY



PARIS



PIÑA



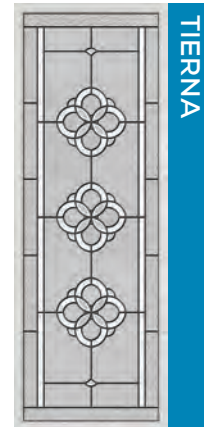
RADIANT HUES



RENEWED IMPRESSIONS



REPARTEE



TIERNA



TOPAZ



TRACE



TRYON

EXCLUSIVE OFFER



WATERSIDE



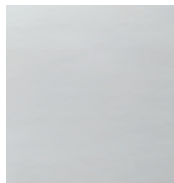
WHISPER



# MINI BLINDS COLLECTION

**ENCLOSED BLINDS MEAN NO DUST OR DIRT, NO KINKS OR DENTS, AND NO BANGING OF THE MINI BLINDS WHEN YOU OPEN AND CLOSE YOUR DOOR.**

### Glass Details



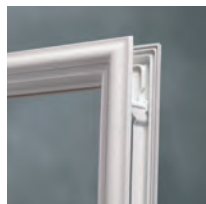
Clear Glass

Available in Low-E Glass

### Privacy Rating



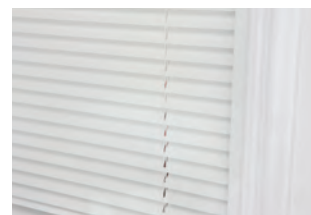
### Glass-Lite Frame



### Raise, Lower and Tilt - No Dusting!



Blinds lower neatly within full privacy channels to eliminate light gaps.



Uniform color in components provide a clean aesthetic look.

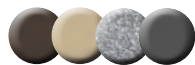


(2) 686RLB LOW-E  
Shown in Fiberglass Smooth Brilliant White Paint

### Mini Blinds Color Collection

Stocked: White

Special Order: Espresso, Sand, Silver Moon, or Slate Gray

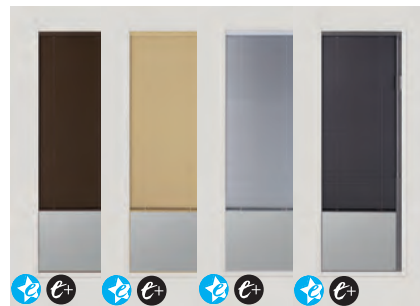


**SPECIAL ORDER**

Available in 3-6 Weeks

Now available!

Please call for more information



### 6/8



607RLB  
22"x48"



608RLB  
22"x48"



682RLB  
22"x36"



683RLB  
22"x36"



684RLB^  
22"x36"



686RLB^  
22"x64"



SL 692RLB  
8"x36"



SL 694RLB  
7"x64"  
TILT ONLY

^ Available in 2/6 size:  
684RLB (20x36)  
686RLB (20x64)

### 6/8 Low-E Glass



681RLB  
GBG  
22"x36"



682RLB  
GBG  
22"x36"



683RLB  
GBG  
22"x36"



689RLB  
GBG  
22"x64"

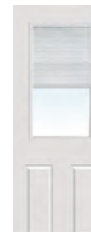
### 8/0



759RLB  
22"x64"



759RLB  
GBG  
22"x64"



906RLB  
22"x48"

# GRILLES BETWEEN GLASS COLLECTION

GRILLES ARE THERMALLY-SEALED BETWEEN PANES OF CLEAR GLASS FOR A SMOOTH, EASY-TO-CLEAN SURFACE.



**(2) 686GBG LOW-E**  
Shown in Fiberglass Smooth Black w/Black GBGs Paint

## Glass Details



Clear Glass

Available in Low-E Glass

## Glass-Lite Frame



## Privacy Rating



Options to match your taste, decor, and budget!



Standard Grilles offer a clean look at a price that won't break the bank.

These grilles strike the geometric balance that is the trademark of Prairie Style architecture.

## Grilles Between Glass Low-E Transoms



Model	Glass Only Size
3313RIMLE	31-3/4" x 11-7/8" x 3/4"
3713RIMLE	35-3/4" x 11-7/8" x 3/4"



Model	Glass Only Size
5113RIMLE	49-1/4" x 11-7/8" x 3/4"



Model	Glass Only Size
6813RIMLE	66-3/4" x 11-7/8" x 3/4"

## Grilles Between Glass Color Collection: 5/8" Flat

Stocked: White & Champagne



Special Order: Tan, Black, Bronze, and Two-Tone Bronze (exterior) / White (interior)



**SPECIAL ORDER**  
Available in 3-6 Weeks  
Now available! Please call for more information





**(2) 686PIM**  
Shown in Fiberglass Smooth  
Hunter Green Paint

# GBG COLLECTION

## 6/8



**659GBG**  
21.8"x9.81"



**682GBG**  
22"x36"



**683GBG**  
22"x36"



**684GBG**  
22"x36"



**686GBG**  
22"x64"



**692GBG**  
(2) 8"x36"



**SL**  
**692GBG**  
8"x36"



**SL**  
**694GBG**  
7"x64"

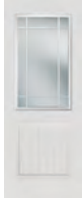


**SL**  
**1405GBG**  
11-7/8"x79" or  
13-7/8"x79"

## 6/8 PIM



**682PIM**  
22"x36"



**683PIM**  
22"x36"



**684PIM**  
22"x36"



**686PIM**  
22"x64"



**SL**  
**692PIM**  
8"x36"



**SL**  
**694PIM**  
7"x64"

## 8/0



**759GBG**  
22"x64"



**906GBG**  
22"x48"

Decorative Glass  
Collection

Textured/Privacy  
Glass Collection

Special Order

Mini Blinds  
Collection

Grilles Between  
Glass Collection

Classic  
Collection

Openings

Warranties

# CLASSIC COLLECTION

THE TIMELESS CLASSIC COLLECTION OFFERS A LARGE VARIETY OF DESIGNS AND STYLES TO CHOOSE FROM, ALLOWING FOR A COMPLETELY CUSTOMIZED SPACE.



21, (2) SL145  
Shown in Fiberglass Smooth  
Brilliant White Paint

## Glass Details



Clear Glass

Available in Low-E Glass

## Glass-Lite Frame



## Privacy Rating



One Lite, No Grid



External Standard  
Grille

## Transoms



Model	Size
3713R	37-1/2" x 13-1/2"
3715R	37-1/2" x 15-1/2"



Model	Size
6813R	68-1/2" x 13-1/2"
6815R	68-1/2" x 15-1/2"



Model	Size
6411E	64-1/2" x 11"
6413E	64-1/2" x 13-1/2"



**59**  
Shown in Fiberglass Smooth  
Brilliant White Paint

# CLASSIC COLLECTION

6/8

<b>1</b>	<b>2</b> 10"x10"	<b>4*</b> 22"x36"	<b>5V</b> 22"x36"	<b>10 SHK</b>	<b>20</b>	<b>20 SHK</b>
<b>21</b>	<b>22</b>	<b>23</b> (2) 8"x6"	<b>24</b> 22"x10"	<b>26</b> 22"x64"	<b>30 SHK</b>	<b>31</b>
<b>40</b>	<b>55*</b> 22"x36"	<b>59*</b> 22"x64"	<b>61*</b> 22"x64"	<b>62</b> (2) 8"x36"	<b>65</b> 20"x56"	<b>110</b>
<b>122*</b> 22"x36"	<b>122V*</b> 22"x36"	<b>131</b> 22"x36"	<b>132</b> 22"x36"	<b>140</b>	<b>147</b> 22"x48"	<b>200</b>
<b>220</b> 22"x10"	<b>225</b> 22"x10"	<b>608</b> 22"x48"	<b>630</b>	<b>682</b> 22"x36"	<b>683</b> 22"x36"	<b>SL140L</b> 7"x64"
<b>SL141</b> 8"x36"	<b>SL143</b> 8"x36"	<b>SL145</b> 7"x64"	<b>SL147</b> 8"x48"	<b>SL1400</b> 11-7/8"x79" or 13-7/8"x79"		

\* Different glass size dimensions for 2/6 models

Decorative Glass Collection

Textured Privacy Glass Collection

Special Order

Mini Blinds Collection

Grilles Between Glass Collection

Classic Collection

Openings

Warranties

# CLASSIC COLLECTION

## 6/8 Low-E Glass ☉



**4** 22"x36"  
**59^** 22"x64"  
**61^** 22"x64"  
**122** 22"x36"  
**682** 22"x36"  
**683** 22"x36"



**814\*** 25"x15.25"  
**866\*** 22"x15.25"  
**SL140L** 7"x64"

## 6/8 Zeel Frames with Low-E Glass ☉

See page 15 for more information on the Zeel frame.



**607** 22"x48"  
**608** 22"x48"  
**682** 22"x36"  
**683** 22"x36"  
**684** 22"x36"  
**686** 22"x64"

## 8/0



**59** 22"x80"  
**61** 22"x80"  
**147** 22"x64"  
**801\*** 24"x21"  
**803\*** 24"x21"  
**806\*** 24"x21"  
**906** 22"x48"  
**SL147** 7"x64"

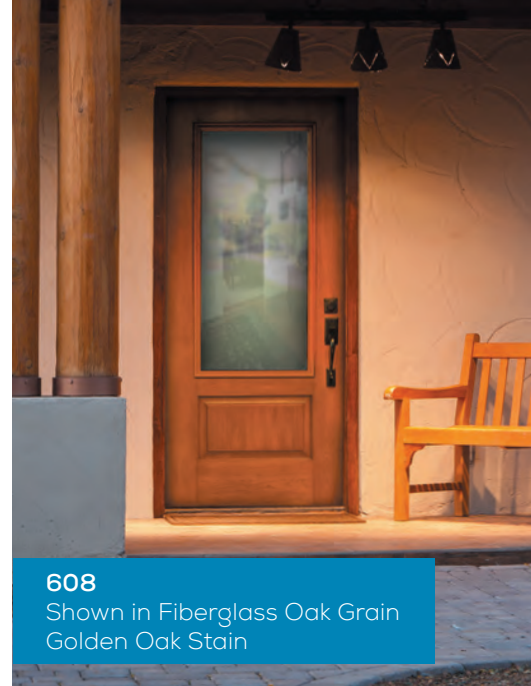
## 8/0 Low-E Glass ☉



**59** 22"x80"  
**147** 22"x64"  
**SL147** 7"x64"

\* Dentil Shelf Available

^ Different glass size dimensions for 2/6 models



**608**  
 Shown in Fiberglass Oak Grain  
 Golden Oak Stain



**683 w/Zeel Frame, LOW-E**  
 Shown in Fiberglass Smooth  
 Brilliant White Paint



**801 w/Dentil Shelf**  
 Shown in Fiberglass Fir Grain  
 Teak Stain



# EXTERIOR DOOR ORDER FORM

Dealer Name \_\_\_\_\_ Location \_\_\_\_\_ Ordered by: \_\_\_\_\_ PO Number \_\_\_\_\_ Order Date \_\_\_\_\_

**1 Size:** Door  2/0  2/8  5/0  Other \_\_\_\_\_ Height:  6/8  Other \_\_\_\_\_ Sidelite  1/0  
 Width:  2/4  2/10  5/4 \_\_\_\_\_  7/0 \_\_\_\_\_ Width:  1/2  
 2/6  3/0  6/0 \_\_\_\_\_  8/0 \_\_\_\_\_  Other \_\_\_\_\_

**2 Configuration:** (When looking at the unit from the exterior of the building)

Single  1 Sidelite  1 Sidelite  2 Sidelites  Double  Patio 2 Door  Patio 3 Door

**3 Door Handing** (EXT = Exterior • INT = Interior)

<input type="checkbox"/> LH Inswing 	<input type="checkbox"/> LH Strike Side Inswing 	<input type="checkbox"/> RH Strike Side Inswing 	<input type="checkbox"/> LH Inswing 	<input type="checkbox"/> LH Inswing 	<input type="checkbox"/> LH Inswing 	<input type="checkbox"/> LH Center Swing 
<input type="checkbox"/> RH Inswing 	<input type="checkbox"/> RH Hinge Side Inswing 	<input type="checkbox"/> LH Hinge Side Inswing 	<input type="checkbox"/> RH Inswing 	<input type="checkbox"/> RH Inswing 	<input type="checkbox"/> RH Inswing 	<input type="checkbox"/> RH Center Swing 
<input type="checkbox"/> LH Outswing 				<input type="checkbox"/> LH Outswing 		<input type="checkbox"/> LH End Swing 
<input type="checkbox"/> RH Outswing 				<input type="checkbox"/> RH Outswing 		<input type="checkbox"/> RH End Swing 

**4 Sidelite Unit:** Is a storm door extender required?  Yes  No

**5 Double Unit:** The inactive (stationary) door to be bored?  Yes  No

**6 Door(s) and Sidelite(s):**

- FF Fiberglass Fir Grained
- FG Fiberglass Oak Grained
- FS Fiberglass Smooth
- FM Fiberglass Mahogany
- Prem ACC Fiberglass Cherry
- Prem ACF Fiberglass Fir
- Prem ACKA Fiberglass Knotty Alder
- Prem ACM Fiberglass Mahogany
- Prem ACO Fiberglass Oak
- Prem ACRC Fiberglass Rustic Cherry
- BCF Builder's Classic Fiberglass
- MJ Majestic Steel (Steel Edge)
- MP Replacement Steel (Steel Edge)

Door Model # \_\_\_\_\_  
 Sidelite Model # \_\_\_\_\_  
 Paint/Stain Door(s) Sidelite(s) \_\_\_\_\_  
 Outside Color \_\_\_\_\_  
 Inside Color \_\_\_\_\_

**7 Frame Options:**

- Slab only, no frame
- 4-9/16"
- 5-1/4"
- 6-9/16"
- Other \_\_\_\_\_
- Prime Standard
- FrameSaver
- FrameSaver Fusion
- White Capped
- Primed Composite
- Woodgrain Composite
- Aluminum Clad
  - White
  - Sandstone
  - Other \_\_\_\_\_

**8 Sill Options:**

- Mill Finish Adjustable Standard
- Bronze Adjustable
- Mill Finish Fixed
- Other \_\_\_\_\_

**9 Hinge Options:**

- Satin Nickel Standard
- Lite Brass
- Bright Brass
- Antique Brass
- Colonial Bronze
- Antique Nickel
- Black
- Bright Chrome
- Brushed Chrome
- Spring
- Ball-Bearing
- NRP

**10 Preps Options:**

**Deadbolt Bore:**  2-1/8"  Other \_\_\_\_\_  
**Peep Prep:**  1/2" (20" from top of door)  Other \_\_\_\_\_  
**Weatherstrip:**  Compression Standard  Magnetic Optional  
**Cardboard Door Protector:**  1 Side  2 Sides

**11 Transoms:**

Model # \_\_\_\_\_  
 Other \_\_\_\_\_

**12 Special Instructions:** \_\_\_\_\_



# OPENINGS

## Exterior Fiberglass & Steel Rough Opening Widths - Measure stud to stud for inswing or outswing units

Door Size	Base Unit	One 6"	Two 6"	One 12"	Two 12"	One 14"	Two 14"	6/8	7/0	8/0
2/0 Single	26"	33-1/2"	41"	39-1/2"	53"	41-1/2"	57"	82-1/4"	86-1/4"	98-1/4"
2/4 Single	30"	37-1/2"	45"	43-1/2"	57"	45-1/2"	61"	82-1/4"	86-1/4"	98-1/4"
2/6 Single	32"	39-1/2"	47"	45-1/2"	59"	47-1/2"	63"	82-1/4"	86-1/4"	98-1/4"
2/8 Single	34"	41-1/2"	49"	47-1/2"	61"	49-1/2"	65"	82-1/4"	86-1/4"	98-1/4"
2/10 Single	36"	43-1/2"	51"	49-1/2"	63"	51-1/2"	67"	82-1/4"	86-1/4"	98-1/4"
3/0 Single	38"	45-1/2"	53"	51-1/2"	65"	53-1/2"	69"	82-1/4"	86-1/4"	98-1/4"
3/6 Single	44"	51-1/2"	59"	57-1/2"	71"	59-1/2"	75"	82-1/4"	86-1/4"	98-1/4"
5/0 Pair	62-1/2"	-	77-1/2"	-	89-1/2"	-	93-1/2"	82-1/4"	86-1/4"	98-1/4"
5/4 Pair	66-1/2"	-	81-1/2"	-	93-1/2"	-	97-1/2"	82-1/4"	86-1/4"	98-1/4"
6/0 Pair	74-1/2"	-	89-1/2"	-	101-1/2"	-	105-1/2"	86-1/4"	98-1/4"	98-1/4"

### Unit Dimensions - Measured from outside frame to outside of frame, not including brickmould.

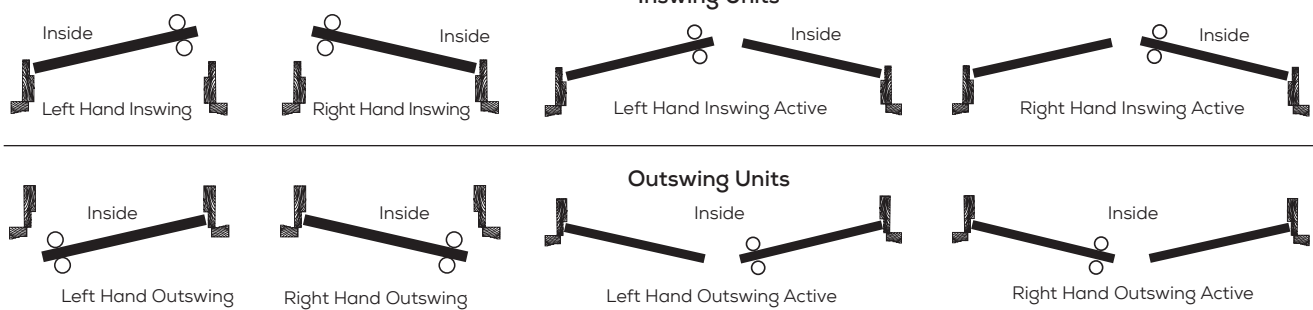
2/0 Single	25-1/2"	33"	40-1/2"	39"	52-1/2"	41"	56-1/2"	81-5/8"	85-5/8"	97-5/8"
2/4 Single	29-1/2"	37"	44-1/2"	43"	56-1/2"	45"	60-1/2"	81-5/8"	85-5/8"	97-5/8"
2/6 Single	31-1/2"	39"	46-1/2"	45"	58-1/2"	47"	62-1/2"	81-5/8"	85-5/8"	97-5/8"
2/8 Single	33-1/2"	41"	48-1/2"	47"	60-1/2"	49"	64-1/2"	81-5/8"	85-5/8"	97-5/8"
2/10 Single	35-1/2"	43"	50-1/2"	49"	62-1/2"	51"	66-1/2"	81-5/8"	85-5/8"	97-5/8"
3/0 Single	37-1/2"	45"	52-1/2"	51"	64-1/2"	53"	68-1/2"	81-5/8"	85-5/8"	97-5/8"
3/6 Single	43-1/2"	51"	58-1/2"	57"	70-1/2"	59"	74-1/2"	81-5/8"	85-5/8"	97-5/8"
5/0 Pair	62"	-	77"	-	89"	-	93"	81-5/8"	85-5/8"	97-5/8"
5/4 Pair	66"	-	81"	-	93"	-	97"	81-5/8"	85-5/8"	97-5/8"
6/0 Pair	74"	-	89"	-	101"	-	105"	81-5/8"	85-5/8"	97-5/8"

Outswing unit height and low profile ADA unit: Deduct 3/4" from rough opening height.

For outside brickmould to outside brickmould INSWING unit add to frame sizes: Width 2-1/2" and height 1-1/4"

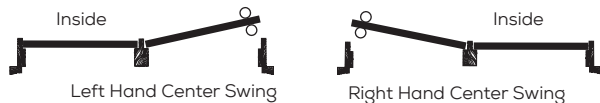
For outside brickmould to outside brickmould OUTSWING unit add to frame sizes: Width 3" and height 1-1/4"

## Handings

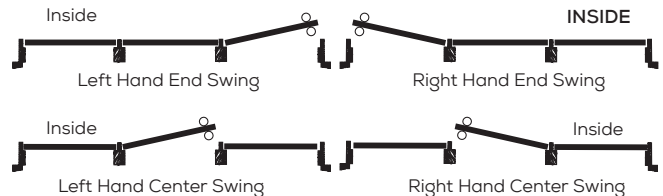


## Patio Handings

### 2 Door



### 3 Door



## Elliptical Transoms

Model	Outside Dimension	Fits Over	Rough Opening with 6/8 Door
6411E	68-1/2" x 11"	1/2 • 3/0 • 1/2	69" x 93"
6413E	64-1/2" x 13-1/2"	1/0 • 3/0 • 1/0	65" x 95-1/2"

## Rectangle Transoms

Model	Outside Dimension	Fits Over	Rough Opening with 6/8 Door
3713R	37-1/2" x 13-1/2"	3/0	38" x 95-1/2"
3715R	37-1/2" x 15-1/2"	3/0	38" x 97-1/2"
6813R	68-1/2" x 13-1/2"	1/2 • 3/0 • 1/2	69" x 95-1/2"
6815R	68-1/2" x 15-1/2"	1/2 • 3/0 • 1/2	69" x 97-1/2"

## GBG Transoms

Model	Outside Dimension	Fits Over	Rough Opening with 6/8 Door
3711RIM	37-1/2" x 11"	3/0	38" x 93"
6411RIM	64-1/2" x 11"	1/0 • 3/0 • 1/0	65" x 93"
6415RIM	64-1/2" x 15-1/2"	1/0 • 3/0 • 1/0	65" x 97-1/2"
6811RIM	68-1/2" x 11"	1/2 • 3/0 • 1/2	69" x 93"
6815RIM	68-1/2" x 15-1/2"	1/2 • 3/0 • 1/2	69" x 97-1/2"

## Decorative Transoms

Model	Outside Dimension	Fits Over	Rough Opening with 6/8 Door
521	64-1/2" x 13-1/2"	1/0 • 3/0 • 1/0	65" x 14"

# DOOR WARRANTIES

## Fiberglass Doors Limited Warranty Limited Lifetime Door Component • 2 Years - Prehung System

### WARRANTY COVERAGE:

MMI DOOR warrants that its fiberglass entry door component product ("Product") is free from defects in material and workmanship which will make the Product unfit for its normal and recommended use. THE DURATION OF THIS WARRANTY BEGINS ON THE DATE OF PURCHASE BY THE CUSTOMER AND EXTENDS FOR THE FOLLOWING PERIOD:

1. Limited Lifetime Warranty for the door component of the base prehung system\*.
2. Two (2) years for the Builder's Classic door component of the base prehung system\*.
3. Two (2) years on our Msystem2 base prehung door system\*. MMI DOOR will adjust, repair or replace the product if it fails to perform to the published performance criteria based on independent testing. This warranty extends for 2 years as long as you own your home. This warranty is non-transferable.
4. Limited Lifetime Warranty when upgrading to Composite or FrameSaver Frames for our MSystem Lifetime Warranty. This extends warranty of prehung door unit and door component, without extending the 10 year door lite component warranty. This warranty is non-transferable.
5. Five (5) years from the date of installation for the stained or painted finish by MMI DOOR on the door component of the fiberglass prehung door unit. Coverage against deficiencies in material and workmanship of the finish, as well as coverage against flaking, cracking, checking, blistering and peeling.

\* Base prehung system = door component prehung on a primed wood frame

### EXCLUSIONS FROM COVERAGE:

This warranty does not cover:

1. Door units not installed according to published unit dimensions and installation instructions.
  - a. Double doors with an astragal should not be installed in a direct weather exposure or without a proper overhang. An ideal overhang must extend at least four feet wider (two feet each side) than the door unit and at least five feet out from the house. Failure to adhere to these overhang and directional requirements will void any warranty coverage.
2. Defects or damages arising out of shipment by common carriers, private transportation or other means of transportation.
3. Defects or damages arising out of improper handling or cleaning, defective or improper installation, defective or improper glazing, accident, act of God, intentional human act, misuse or abuse, or any other circumstances beyond the control of MMI DOOR.
4. Warp not exceeding 1/4" in the plane of the door panel, bow or misalignment in the door frame in which the door panel is hung.
5. Products installed in high-moisture environments, such as swimming pool enclosures or greenhouses.
6. Product used or installed in non-residential environments, including but not limited to, retail or commercial applications.
7. Products not finished/painted, or in accordance with installation instructions.
8. Products finished/painted a dark color with prolonged exposure to direct sunlight.
9. Products finished with non-recommended paints or topcoats.
10. Performance of finish paints.
11. Labor, shipping or other charges incurred or claimed by the Customer.
12. Use of chemical based cleaners on a prefinished unit.

### WARRANTY CLAIM PROCEDURES:

If within the applicable warranty period the Customer discovers a defect in the Product which is covered by this warranty, the Customer must follow this procedure:

1. The Customer must promptly present a written claim to  
MMI DOOR 6361 Sterling Dr. North, Sterling Heights, MI 48312.
2. The Customer must use reasonable diligence to include in the written claim all of the following:
  - a. Adequate description of defect(s).
  - b. Identification of Product design or pattern.
  - c. Exact Product size.
  - d. Date Product was manufactured.
  - e. Date of the Customer's purchase and the date of delivery to the Customer.
3. The Customer, at MMI DOOR's option, must permit MMI DOOR or its representative to inspect the Product.

### REMEDIES:

After receiving a valid claim, MMI DOOR will, at its option, (a) repair the Product, or (b) provide a replacement Product (or part, as appropriate) of like kind and design.

### DISCLAIMER OF WARRANTY:

MMI DOOR MAKES NO IMPLIED WARRANTY, INCLUDING WARRANTIES OF MERCHANTABILITY OR FITNESS FOR A PARTICULAR PURPOSE, WITH RESPECT TO THE PRODUCT (OR ANY REPLACEMENT), AND MAKES NO OTHER WARRANTIES, EXPRESS OR IMPLIED, STATUTORY OR OTHERWISE, WITH RESPECT TO THE PRODUCT (OR ANY REPLACEMENT), EXCEPT TO THE EXTENT PROVIDED HEREIN.

### LIMITATION OF REMEDIES:

THE REMEDIES SET FORTH ABOVE ARE THE CUSTOMER'S EXCLUSIVE REMEDIES FOR BREACH OF WARRANTY. IN NO CASE SHALL MMI DOOR BE LIABLE TO THE CUSTOMER OR ANY OTHER PERSON FOR ANY GENERAL, INCIDENTAL OR CONSEQUENTIAL DAMAGES. SOME STATES DO NOT PERMIT ANY LIMITATION ON THE LENGTH OF AN IMPLIED WARRANTY, OR ANY EXCLUSION OR LIMITATION OF INCIDENTAL OR CONSEQUENTIAL DAMAGES, AND THEREFORE SOME LIMITATION OR EXCLUSIONS IN THIS WARRANTY MAY NOT APPLY.

Unless modified in a later writing signed by both MMI DOOR and the claimant, this warranty is the complete and exclusive warranty relating to the Product, superseding all earlier agreements and other communications relating to the Product. No employee of MMI DOOR or any other party is authorized to make any warranty in addition to this warranty. Invalidation of any one or more of the provisions of this warranty shall not invalidate or affect any one of the other provisions hereof, which shall remain in full force and effect.

This warranty is not transferable. This warranty provides specific legal rights, and other rights, which vary from state to state, may be available.

\* Storm doors void warranty due to possible excessive heat buildup.

## 10 Year Exterior Door Glass-Lite Warranty

### WARRANTY COVERAGE:

MMI DOOR warrants that its Glass component product ("Product") is free from defects in material and workmanship which will make the Product unfit for its normal and recommended use. THE DURATION OF THIS WARRANTY BEGINS ON THE DATE OF PURCHASE BY THE CUSTOMER AND EXTENDS FOR THE FOLLOWING PERIOD:

1. Ten (10) years for the glass component for seal failure.
2. Lifetime for Frame component against warping and cracking

### EXCLUSION FROM COVERAGE:

This warranty does not cover:

1. Defects or damages arising out of shipment by common carriers, private transportation or other means of transportation.
2. Defects or damages arising out of improper handling or cleaning, defective or improper installation, defective or improper glazing, accident, act of God, intentional human act, misuse or abuse, or any other circumstances beyond the control of MMI DOOR.
3. Products installed in high-moisture environments, such as swimming pool enclosures or greenhouses.
4. Product used or installed in high-vibration environments.
5. Products not finished-painted in accordance with door edge label or installation instructions.
6. Product finished with non-recommended paints, stains or topcoats.
7. Performance of finish paints.
8. Labor, shipping or other charges incurred or claimed by the Customer.

### WARRANTY CLAIM PROCEDURES:

If within the applicable warranty period the Customer discovers a defect in the Product which is covered by this warranty, the Customer must follow this procedure:

1. The Customer must promptly present a written claim to MMI DOOR 6361 Sterling Dr. North, Sterling Heights, MI 48312. MMI DOOR must receive this claim no later than ten (10) years after the date of the Customer's purchase.
2. The Customer must use reasonable diligence to include in the written claim all of the following:
  - a. Adequate description of defect(s).
  - b. Identification of Product design or pattern.
  - c. Exact Product size.
  - d. Date Product was manufactured.
  - e. Date of the Customer's purchase and the date of delivery to the Customer.
3. The Customer, at MMI DOOR's option, must permit MMI DOOR or its representative to inspect the Product.

1. The Customer must promptly present a written claim to  
MMI DOOR 6361 Sterling Dr. North, Sterling Heights, MI 48312.
2. The Customer must use reasonable diligence to include in the written claim all of the following:
  - a. Adequate description of defect(s).
  - b. Identification of Product design or pattern.
  - c. Exact Product size.
  - d. Date Product was manufactured.
  - e. Date of the Customer's purchase and the date of delivery to the Customer.
3. The Customer, at MMI DOOR's option, must permit MMI DOOR or its representative to inspect the Product.

### REMEDIES:

After receiving a valid claim, MMI DOOR will, at its option, (a) repair the Product, or (b) provide a replacement Product (or part, as appropriate) of like kind and design.

### DISCLAIMER OF WARRANTY:

MMI DOOR MAKES NO IMPLIED WARRANTY, INCLUDING WARRANTIES OF MERCHANTABILITY OR FITNESS FOR A PARTICULAR PURPOSE, WITH RESPECT TO THE PRODUCT (OR ANY REPLACEMENT), AND MAKES NO OTHER WARRANTIES, EXPRESS OR IMPLIED, STATUTORY OR OTHERWISE, WITH RESPECT TO THE PRODUCT (OR ANY REPLACEMENT), EXCEPT TO THE EXTENT PROVIDED HEREIN.

### LIMITATION OF REMEDIES:

THE REMEDIES SET FORTH ABOVE ARE THE CUSTOMER'S EXCLUSIVE REMEDIES FOR BREACH OF WARRANTY. IN NO CASE SHALL MMI DOOR BE LIABLE TO THE CUSTOMER OR ANY OTHER PERSON FOR ANY GENERAL, INCIDENTAL OR CONSEQUENTIAL DAMAGES. SOME STATES DO NOT PERMIT ANY LIMITATION ON THE LENGTH OF AN IMPLIED WARRANTY, OR ANY EXCLUSION OR LIMITATION OF INCIDENTAL OR CONSEQUENTIAL DAMAGES, AND THEREFORE SOME LIMITATION OR EXCLUSIONS IN THIS WARRANTY MAY NOT APPLY.

Unless modified in a later writing signed by both MMI DOOR and the claimant, this warranty is the complete and exclusive warranty relating to the Product, superseding all earlier agreements and other communications relating to the Product. No employee of MMI DOOR or any other party is authorized to make any warranty in addition to this warranty. Invalidation of any one or more of the provisions of this warranty shall not invalidate or affect any one of the other provisions hereof, which shall remain in full force and effect.

This warranty is not transferable. This warranty provides specific legal rights, and other rights, which vary from state to state, may be available.

\*After year 5, Homeowner may be responsible for a prorated portion of glass warranty cost.

# DOOR WARRANTIES

## Majestic Steel Limited Warranty 10 Years - Majestic Door Component • 2 Years - Prehung System

### WARRANTY COVERAGE:

MMI DOOR warrants that its Majestic Steel entry door component product ("Product") is free from defects in material and workmanship which will make the Product unfit for its normal and recommended use. THE DURATION OF THIS WARRANTY BEGINS ON THE DATE OF PURCHASE BY THE CUSTOMER AND EXTENDS FOR THE FOLLOWING PERIOD:

1. Ten (10) years for the Majestic door component of the base prehung system\*.
2. Two (2) years on our MSystem2 base prehung door system\*. MMI DOOR will adjust, repair or replace the product if it fails to perform to the published performance criteria based on independent testing. This warranty extends for 2 years as long as you own your home. This warranty is nontransferable.
3. Limited Lifetime Warranty when upgrading to Composite or FrameSaver Frames for our MSystem Lifetime Warranty. This extends warranty of prehung door unit, without extending door component or door lite component warranty. This warranty is nontransferable.
4. Five (5) years from the date of installation for the painted finish by MMI DOOR on the door component of the Majestic Premium prehung door unit. Coverage against deficiencies in material and workmanship of the finish, as well as coverage against flaking, cracking, checking, blistering and peeling.

\* Base prehung system = door component prehung on a primed wood frame

### EXCLUSIONS FROM COVERAGE:

This warranty does not cover:

1. Door units not installed according to published unit dimensions and installation instructions.
  - a. Double doors with an astragal should not be installed in a direct weather exposure or without a proper overhang. An ideal overhang must extend at least four feet wider (two feet each side) than the door unit and at least five feet out from the house. Failure to adhere to these overhang and directional requirements will void any warranty coverage.
2. Defects or damages arising out of shipment by common carriers, private transportation or other means of transportation.
3. Defects or damages arising out of improper handling or cleaning, defective or improper installation, defective or improper glazing, accident, act of God, intentional human act, misuse or abuse, or any other circumstances beyond the control of MMI DOOR.
4. Warp not exceeding 1/4" in the plane of the door panel, bow or misalignment in the door frame in which the door panel is hung.
5. Products installed in high-moisture environments, such as swimming pool enclosures or greenhouses.
6. Product used or installed in non-residential environments, including but not limited to, retail or commercial applications.
7. Products not finished/painted in accordance with installation instructions.
8. Products finished/painted a dark color with prolonged exposure to direct sunlight.
9. Product finished with non-recommended paints or topcoats.
10. Performance of finish paints.
11. Labor, shipping or other charges incurred or claimed by the Customer.
12. Use of chemical based cleaners on a prefinished unit.

### WARRANTY CLAIM PROCEDURES:

If within the applicable warranty period the Customer discovers a defect in the Product which is covered by this warranty, the Customer must follow this procedure:

1. The Customer must promptly present a written claim to MMI DOOR 6361 Sterling Dr. North, Sterling Heights, MI 48312. MMI DOOR must receive this claim no later than ten (10) years on Majestic doors and two (2) years on Builder's Choice doors after the date of the Customer's purchase.
2. The Customer must use reasonable diligence to include in the written claim all of the following:
  - a. Adequate description of defect(s).
  - b. Identification of Product design or pattern.
  - c. Exact Product size.
  - d. Date Product was manufactured.
  - e. Date of the Customer's purchase and the date of delivery to the Customer.
3. The Customer, at MMI DOOR's option, must permit MMI DOOR or its representative to inspect the Product.

### REMEDIES:

After receiving a valid claim, MMI DOOR will, at its option, (a) repair the Product, or (b) provide a replacement Product (or part, as appropriate) of like kind and design.

### DISCLAIMER OF WARRANTY:

MMI DOOR MAKES NO IMPLIED WARRANTY, INCLUDING WARRANTIES OF MERCHANTABILITY OR FITNESS FOR A PARTICULAR PURPOSE, WITH RESPECT TO THE PRODUCT (OR ANY REPLACEMENT), AND MAKES NO OTHER WARRANTIES, EXPRESS OR IMPLIED, STATUTORY OR OTHERWISE, WITH RESPECT TO THE PRODUCT (OR ANY REPLACEMENT), EXCEPT TO THE EXTENT PROVIDED HEREIN.

### LIMITATION OF REMEDIES:

THE REMEDIES SET FORTH ABOVE ARE THE CUSTOMER'S EXCLUSIVE REMEDIES FOR BREACH OF WARRANTY. IN NO CASE SHALL MMI DOOR BE LIABLE TO THE CUSTOMER OR ANY OTHER PERSON FOR ANY GENERAL, INCIDENTAL OR CONSEQUENTIAL DAMAGES. SOME STATES DO NOT PERMIT ANY LIMITATION ON THE LENGTH OF AN IMPLIED WARRANTY, OR ANY EXCLUSION OR LIMITATION OF INCIDENTAL OR CONSEQUENTIAL DAMAGES, AND THEREFORE SOME LIMITATION OR EXCLUSIONS IN THIS WARRANTY MAY NOT APPLY.

Unless modified in a later writing signed by both MMI DOOR and the claimant, this warranty is the complete and exclusive warranty relating to the Product, superseding all earlier agreements and other communications relating to the Product. No employee of MMI DOOR or any other party is authorized to make any warranty in addition to this warranty. Invalidation of any one or more of the provisions of this warranty shall not invalidate or affect any one of the other provisions hereof, which shall remain in full force and effect.

This warranty is not transferable. This warranty provides specific legal rights, and other rights, which vary from state to state, may be available.



## THOUSANDS OF DOOR OPTIONS RIGHT AT YOUR FINGERTIPS!

- LOCATE A DEALER
- BUILD YOUR DOOR

## GET THE **FREE** MOBILE APP TODAY!

- DOWNLOAD • SNAP • SHARE



For more information on MMI DOOR  
products and services, please visit:  
[www.mmidoor.com](http://www.mmidoor.com)



## MMI DOOR LOCATIONS

### Michigan (HQ)

6361 Sterling Drive North  
Sterling Heights, MI 48312  
586.264.0950  
800.686.9218  
Fax: 586.264.5430

### Ohio

400 Circle Freeway Drive  
Cincinnati, OH 45246  
513.874.6771  
800.215.3770  
Fax: 513.870.0242

### Pennsylvania

172 Plummer Road  
Sidman, PA 15955  
814.487.7800  
800.452.0251  
Fax: 814.487.7850



© 2022 MMI DOOR All Rights Reserved. STLFGENTBROCH 02/22

**608SDL**

Shown in Fiberglass Oak Grain  
Walnut Stain